

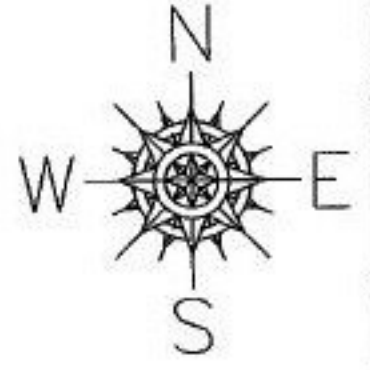
RASTER

PARENT PARCEL: 07-00-020-115-079

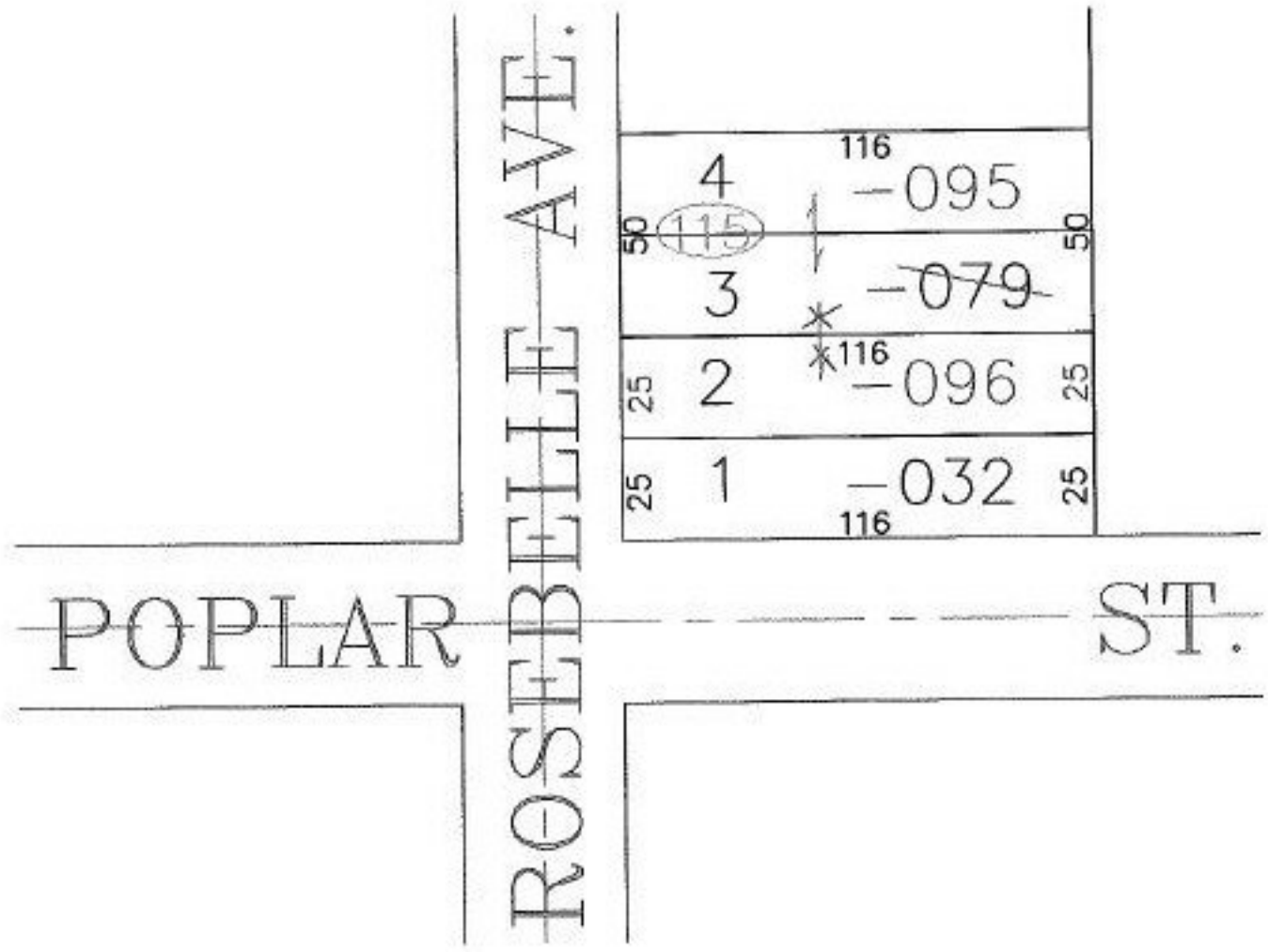
CHILD PARCEL: 07-00-020-115-095, -96

STARTING POINT: RIGHTAWAY LINE OF ROSEBELLE AVE. & POPLAR ST.

NO. 00808



UNCOMBINATION



SPLITS/DEEDS PROCESSED
 LORAIN COUNTY TAX MAP DEPARTMENT
 226 MIDDLE AVE. ELYRIA, OHIO

SURVEYED BY: DANE HAPONEK
 CLOSURE: 0.00 : 10.000
 MAP PAGE(S): 7-00-020-B
 APPROVED BY: JAH DATE: 7-19-01
 SCALE: 1" = 50' PRIOR INSTRUMENT: 7067581628