

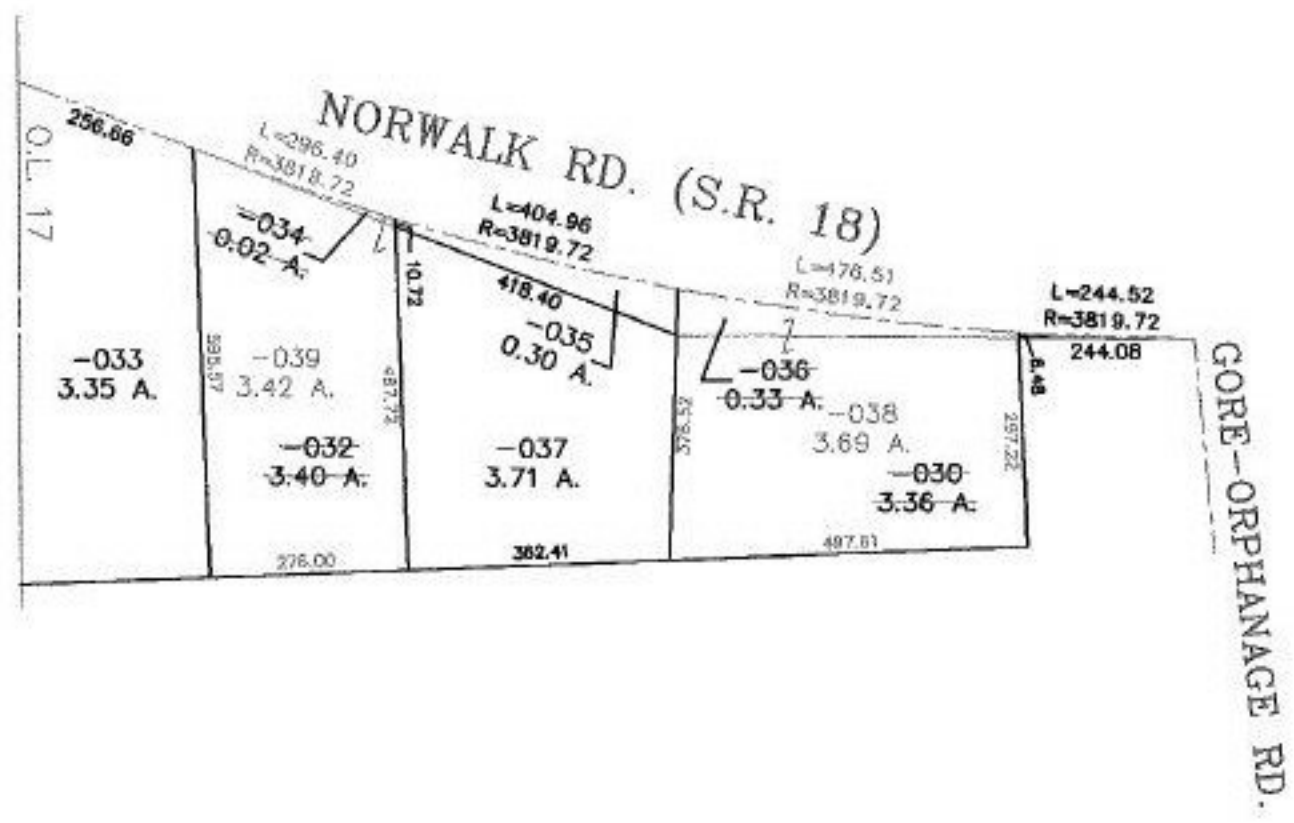
RASTER

PARENT PARCEL: 17-20-017-000-030, -032, -034, -036

CHILD PARCEL: 17-20-017-000-038 & -039

STARTING POINT: CL. OF S.R. 18 & WEST LINE OF O.L. 17

NO. 00806



PRIOR INSTRUMENT: 980556039  
 PRIOR INSTRUMENT: 20010739406  
 PRIOR INSTRUMENT: 980556037  
 PRIOR INSTRUMENT: 20010739408



**SPLITS/DEEDS PROCESSED**  
 LORAIN COUNTY TAX MAP DEPARTMENT  
 226 MIDDLE AVE. ELYRIA, OHIO

SURVEYED BY: THOMAS M. SNEZEK  
 CLOSURE: 0.01 : 10.000  
 MAP PAGE(S): 17-E  
 APPROVED BY: TJS DATE: 7/18/01  
 SCALE: 1" = 300'