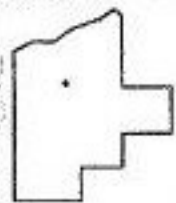
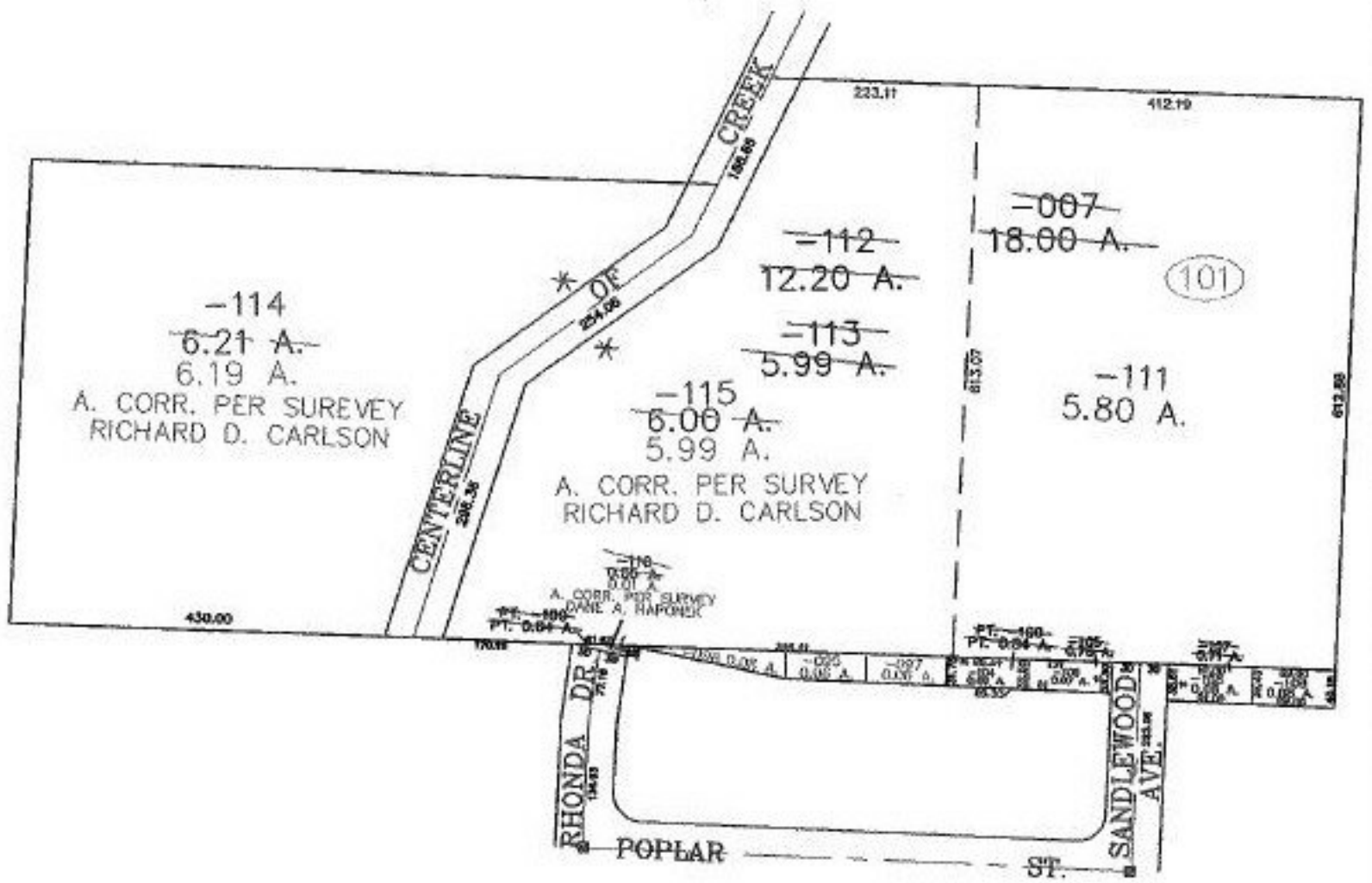


RASTER

PARENT PARCEL: 07-00-020-101-100, 07-00-020-101-007
CHILD PARCEL: 07-00-020-101-104 THRU -115
STARTING POINT: CENTERLINE OF SANDLEWOOD AVE & POPLAR ST.

NO. 00803



SPLITS/DEEDS PROCESSED
LORAIN COUNTY TAX MAP DEPARTMENT
226 MIDDLE AVE. ELYRIA, OHIO

SURVEYED BY: DANE HAPONEK, RICK CARLSON
CLOSURE: 0.01 : 10.000
MAP PAGE(S): 7-00-020-A, C
APPROVED BY: JAH DATE: 7-13-01
SCALE: 1" = 200' PRIOR INSTRUMENT: 980584765