

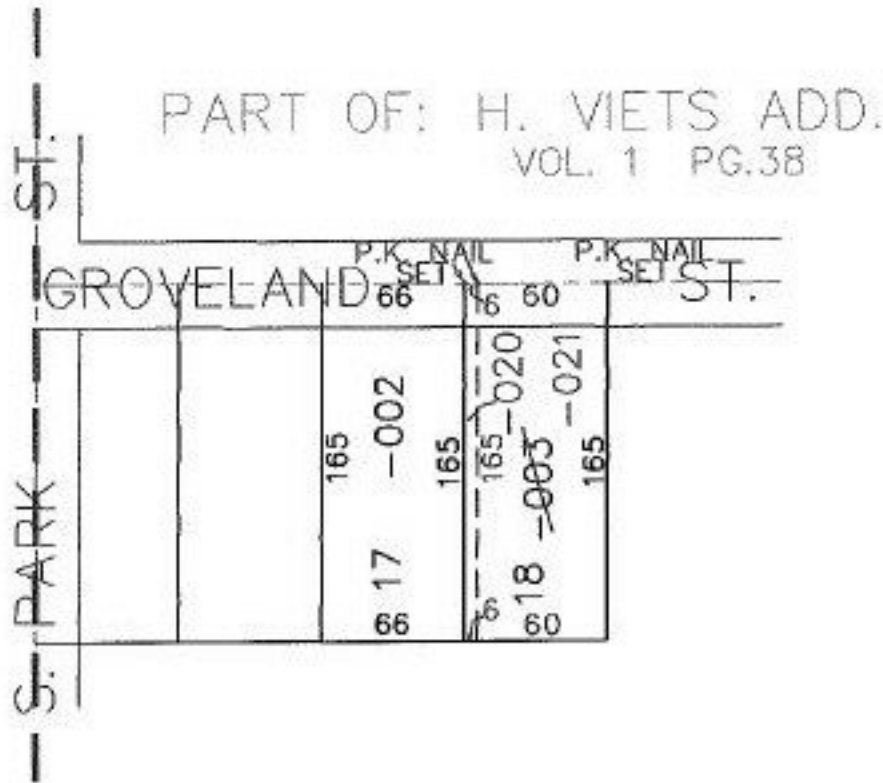
MASTER

PARENT PARCEL: 09-00-086-111-003

CHILD PARCEL: 09-00-086-111-020,021

STARTING POINT: INTERSECTION OF C/L OF GROVELAND ST. AND C/L OF S. PARK ST.

NO. 00782



SPLITS/DEEDS PROCESSED

LORAIN COUNTY TAX MAP DEPARTMENT
226 MIDDLE AVE. ELYRIA, OHIO

SURVEYED BY: D.ELWELL

CLOSURE: 00:10.000

MAP PAGE(S): 9-00-086-B

APPROVED BY: RRM DATE: 6-18-01

SCALE: 1" = 100' PRIOR INSTRUMENT: 20000714171