

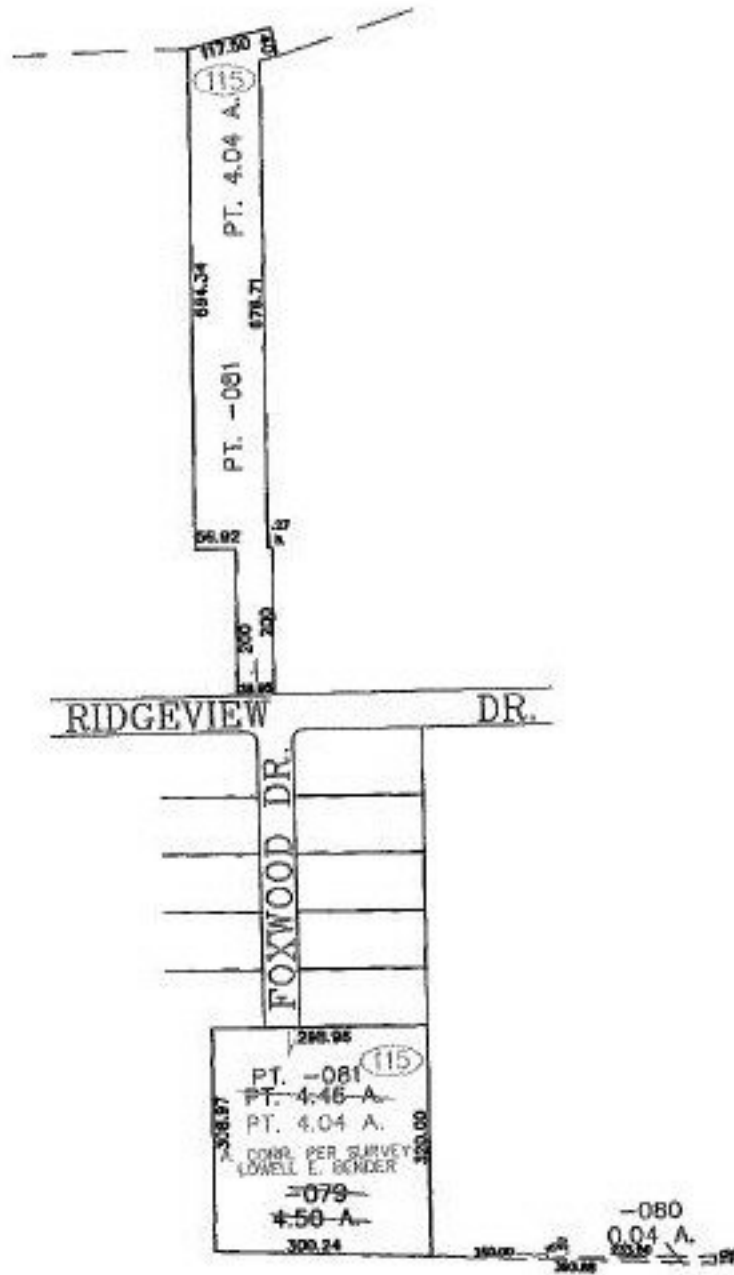
MASTER

PARENT PARCEL: 01-00-002-115-079

CHILD PARCEL: 01-00-002-115-080, -081

STARTING POINT: SW CORNER OF S/L 49 OF WOODLANDS ESTATES SUBD. NO. 5

NO. 00738



**SPLITS/DEEDS PROCESSED**  
**LORAIN COUNTY TAX MAP DEPARTMENT**  
 226 MIDDLE AVE. ELYRIA, OHIO

SURVEYED BY: LOWELL E. BENDER  
 CLOSURE: 0.00 : 10.000  
 MAP PAGE(S): 1-00-002-C  
 APPROVED BY: JAH DATE: 6-8-01  
 SCALE: 1" = 300' PRIOR INSTRUMENT: PLAT 53/23