

RASTER

PARENT PARCEL: 03-00-040-111-022

CHILD PARCEL: 03-00-040-111-067, -068

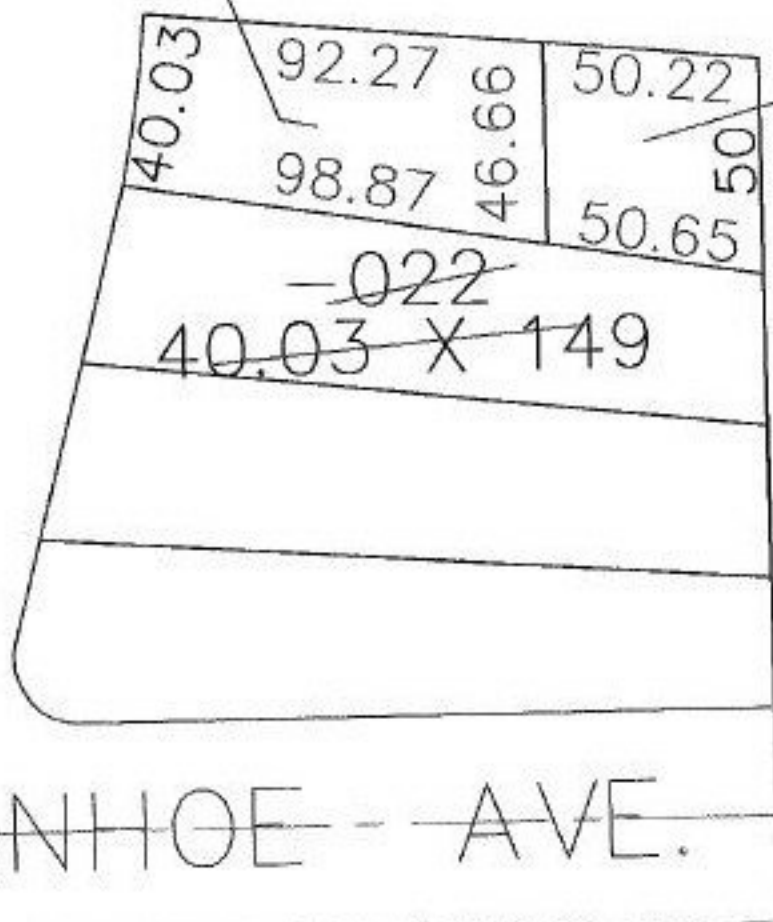
STARTING POINT: SOUTHEAST CORNER OF S/L 34

NO. 00737



BROOKSIDE BLVD.

40.03 X 98.87 ⁻⁰⁶⁸ 40.66 X 50.65 ⁻⁰⁶⁷



IVANHOE - - AVE.



SPLITS/DEEDS PROCESSED

LORAIN COUNTY TAX MAP DEPARTMENT
226 MIDDLE AVE. ELYRIA, OHIO

SURVEYED BY: MICHAEL A. STRAUB

CLOSURE: N/A

MAP PAGE(S): 3-00-040

APPROVED BY: BRM DATE: 5-4-01

SCALE: 1" = 50' PRIOR INSTRUMENT: DV 1403/369