

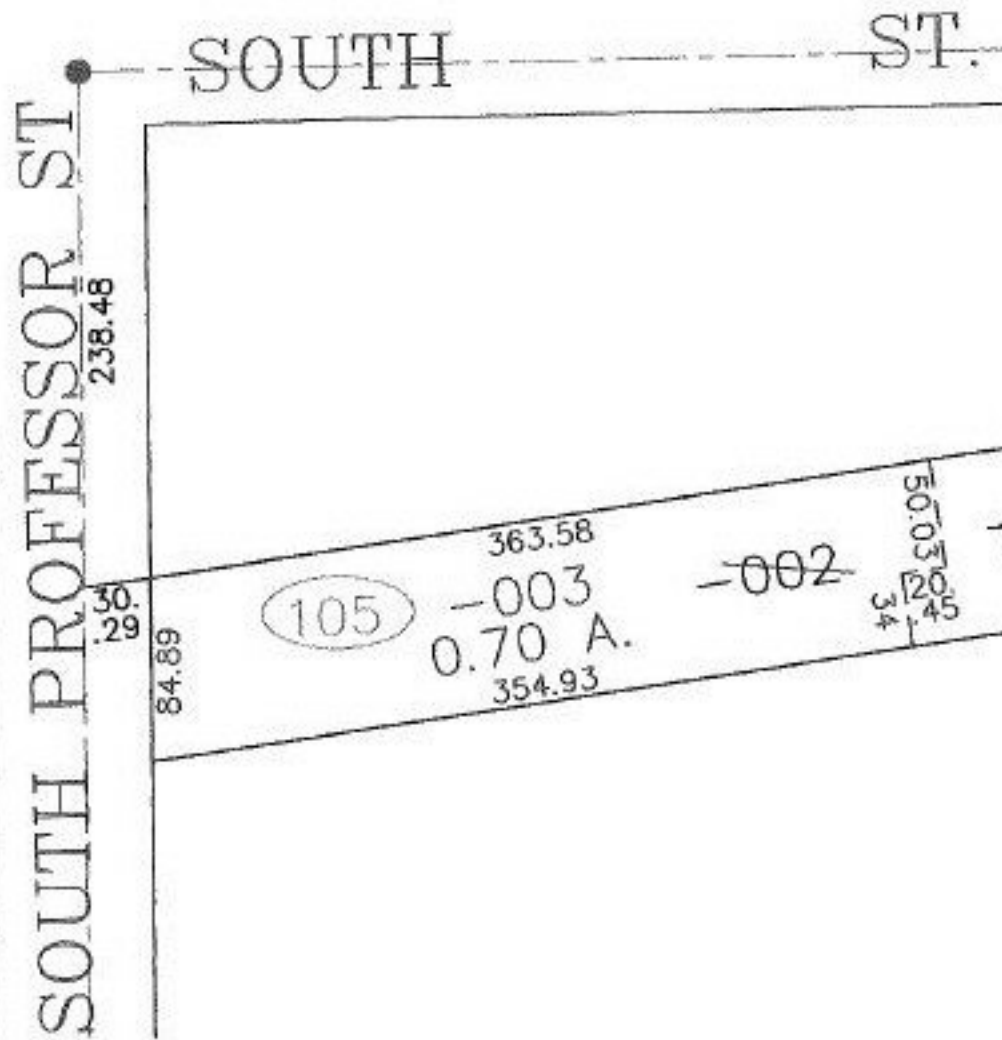
RASTER

PARENT PARCEL: 09-00-095-105-002

CHILD PARCEL: 09-00-095-105-003, -004

STARTING POINT: CENTERLINE OF SOUTH ST. & SOUTH PROFESSOR ST.

NO. 00736



**SPLITS/DEEDS PROCESSED**

LORAIN COUNTY TAX MAP DEPARTMENT  
226 MIDDLE AVE. ELYRIA, OHIO

SURVEYED BY: THOMAS A. SIMON

CLOSURE: 0.00 ; 10.000

MAP PAGE(S): 9-00-095-B

APPROVED BY: JAH DATE: 5-8-01

SCALE: 1" = 100' PRIOR INSTRUMENT: OR 123/576