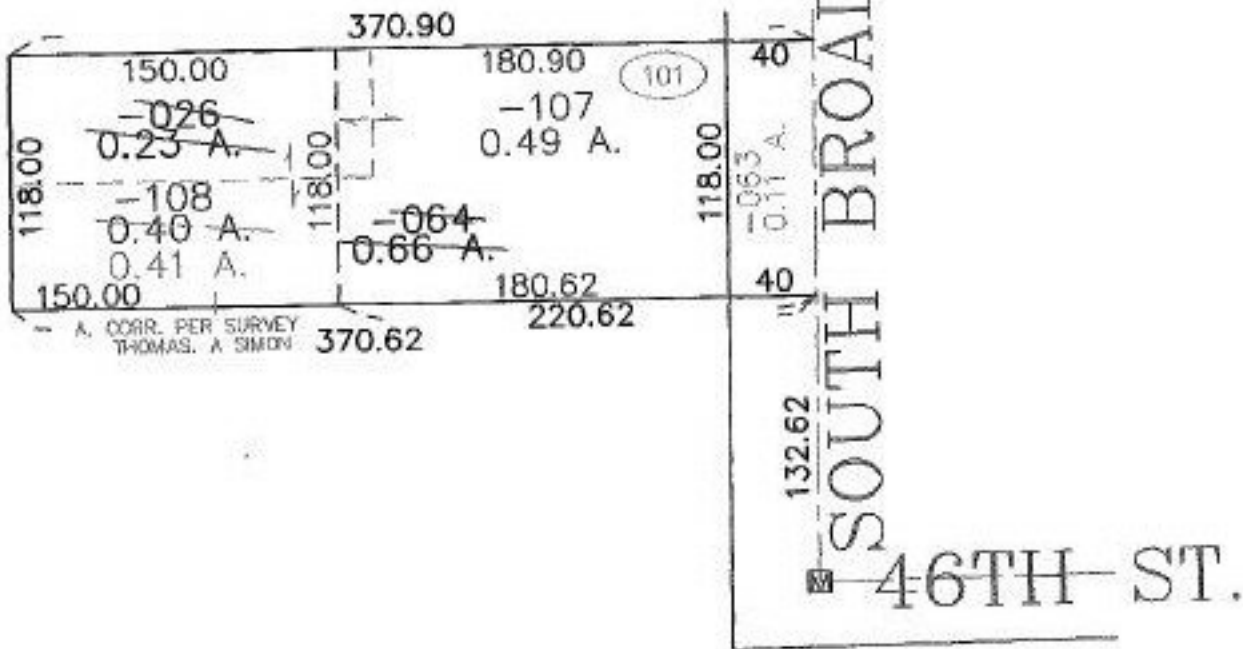


RASTER

PARENT PARCEL: 03-00-108-101-026, -064
CHILD PARCEL: 03-00-108-101-107, -108
STARTING POINT: CENTERLINE OF SOUTH BROADWAY & 46TH ST.

NO. 00731



SPLITS/DEEDS PROCESSED

LORAIN COUNTY TAX MAP DEPARTMENT
226 MIDDLE AVE. ELYRIA, OHIO

SURVEYED BY: THOMAS A. SIMON
CLOSURE: 0.00 : 10.000
MAP PAGE(S): 3-00-108-A
APPROVED BY: JAH DATE: 4-26-01
SCALE: 1" = 100' PRIOR INSTRUMENT: OR 1050/B13