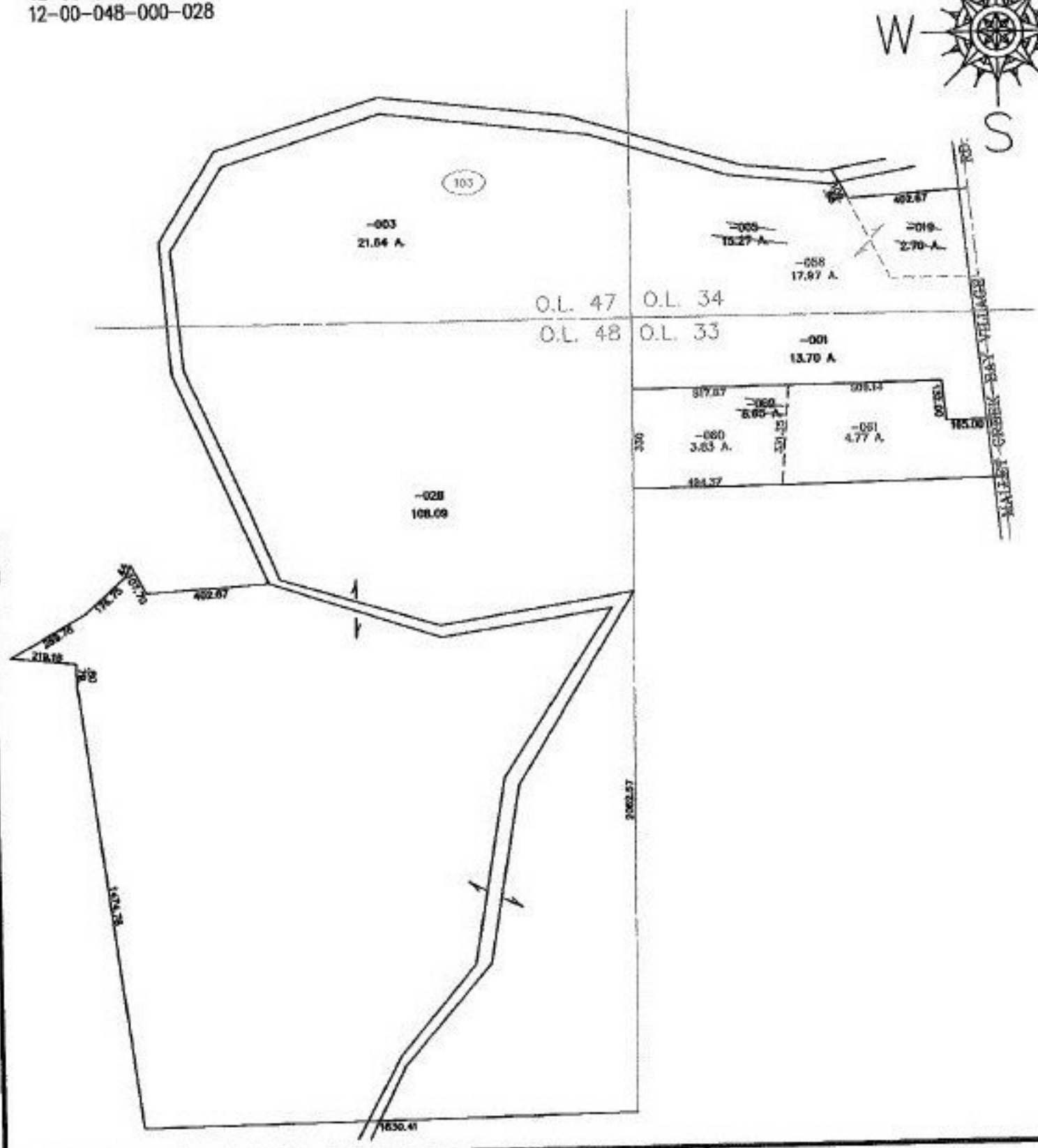


RASTER

NO. 00713

PARENT PARCEL: *SEE BELOW
CHILD PARCEL: 12-00-033-000-060, -061 12-00-034-000-056
STARTING POINT: CENTERLINE OF COLUMBIA-MALLET RD. & O.L. 33

- *12-00-033-000-001, -002
- 12-00-034-000-005, -019
- 12-00-047-103-003
- 12-00-048-000-028



SPLITS/DEEDS PROCESSED
LORAIN COUNTY TAX MAP DEPARTMENT
 226 MIDDLE AVE. ELYRIA, OHIO

SURVEYED BY: GEORGE A. HOFFMAN
 CLOSURE: NO CLOSURE
 MAP PAGE(S): 12-G
 APPROVED BY: JAH DATE: 4-9-01
 SCALE: 1" = 100' PRIOR INSTRUMENT: DV 897/41