

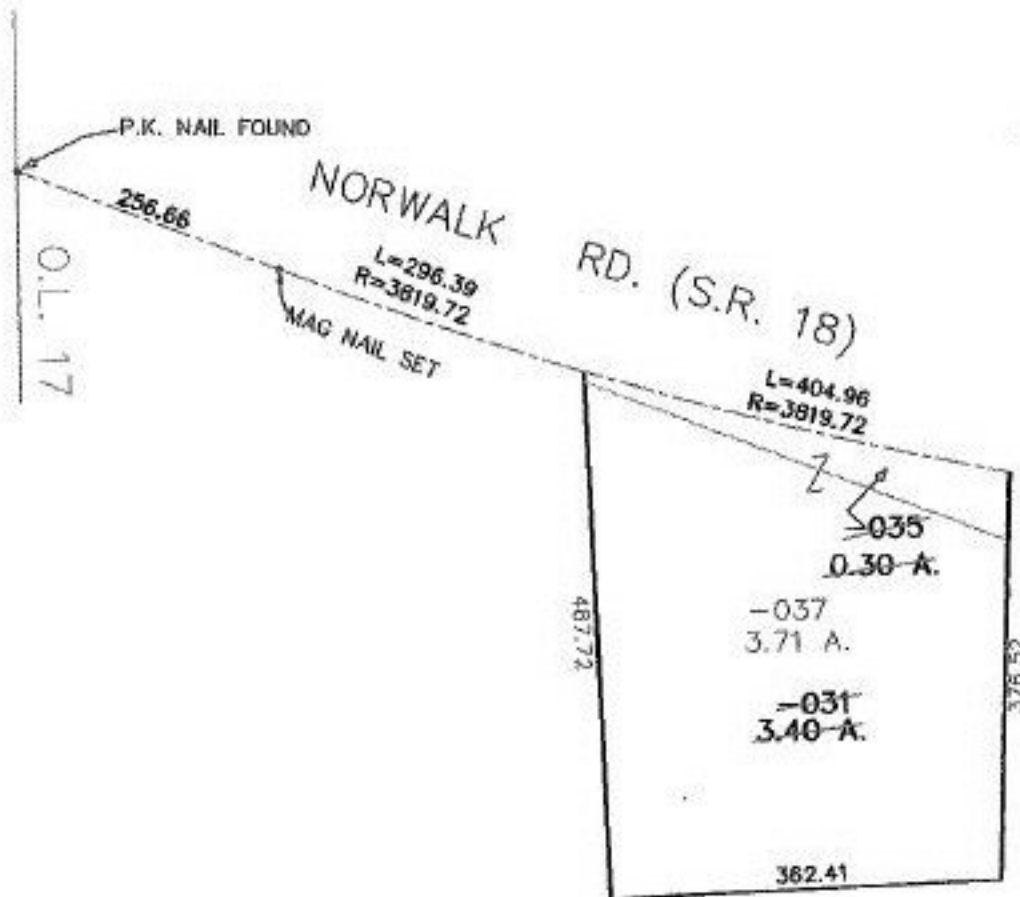
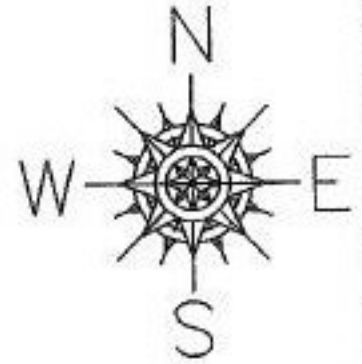
RASTER

PARENT PARCEL: 17-20-017-000-031,-035

CHILD PARCEL: 17-20-017-000-037

STARTING POINT: AT A P.K.NAIL FOUND AT THE INTERSECTION OF THE WESTERLY LINE OF O.L.17 AND THE CENTERLINE OF S.R.18

NO. 00711



SPLITS/DEEDS PROCESSED
LORAIN COUNTY TAX MAP DEPARTMENT
 226 MIDDLE AVE. ELYRIA, OHIO

SURVEYED BY: THOMAS M. SNEZEK
 CLOSURE: N/A
 MAP PAGE(S): 17-E
 APPROVED BY: RRM DATE: 5-1-01
 SCALE: 1" = 200' PRIOR INSTRUMENT: 20010739407