

RASTER

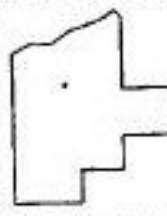
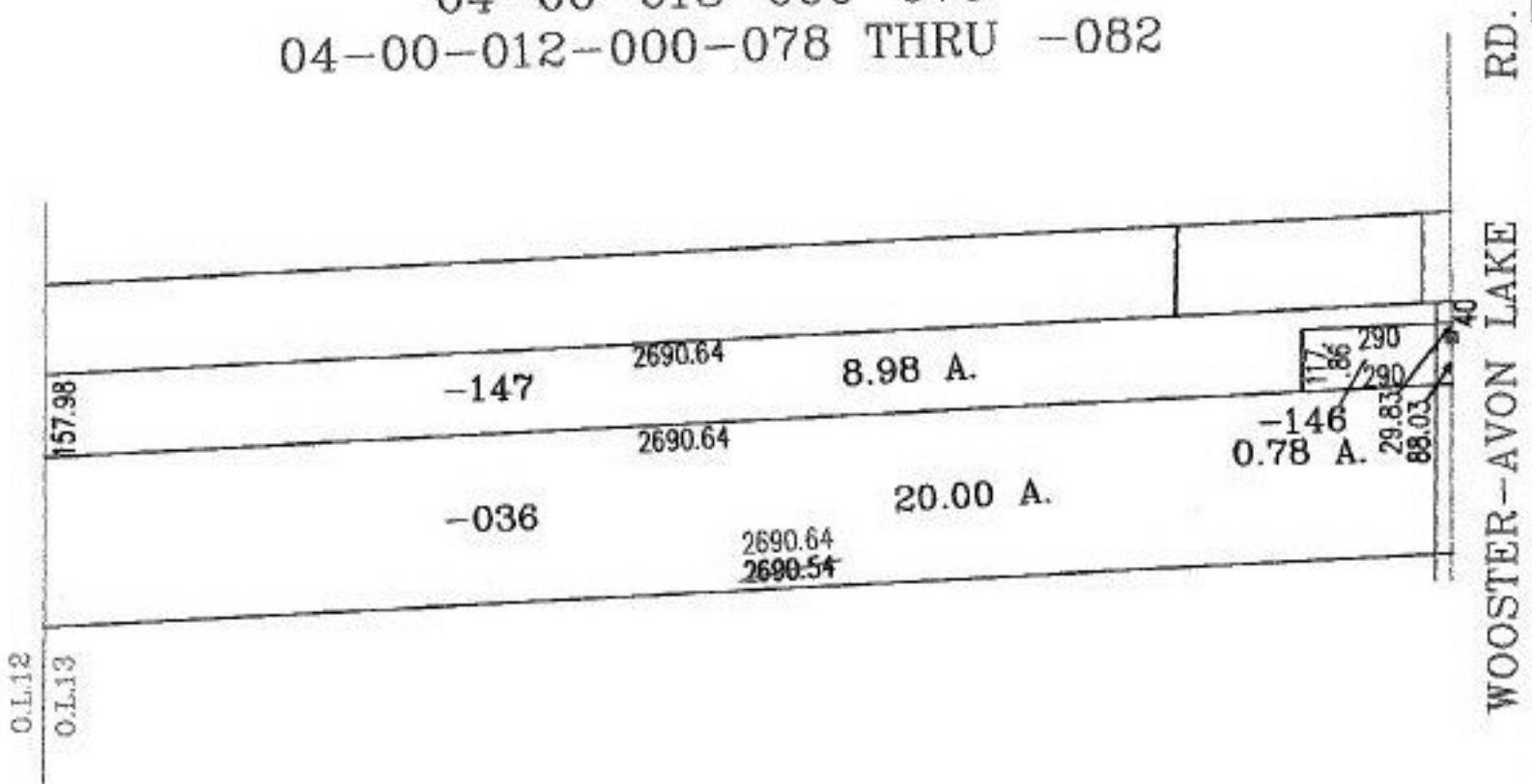
PARENT PARCEL: 04-00-012-000-078 THRU -082, 04-00-013-900-004
04-00-013-000-036, -076, -146, -147
STARTING POINT: NORTHEAST CORNER OF LAND OWNED BY ALBERT HORTWEDEL

NO. 00634-D



STRAIGHT TRANSFER

04-00-013-900-004
04-00-013-000-146
04-00-013-000-147
04-00-013-000-036
04-00-013-000-076
04-00-012-000-078 THRU -082



SPLITS/DEEDS PROCESSED
LORAIN COUNTY TAX MAP DEPARTMENT
226 MIDDLE AVE. ELYRIA, OHIO

SURVEYED BY: DEED
CLOSURE: 07:10.000
MAP PAGE(S): 4-00-012-A, 4-00-013-E&F
APPROVED BY: RRM DATE: 1-8-02
SCALE: 1" = 400 PRIOR INSTRUMENT: DV 1306/571