

MASTER

PARENT PARCEL: 06-24-028-104-078
CHILD PARCEL: XXXXXXXXXXXX
STARTING POINT: CL OF WEST RIVER RD. & N.E. CORNER OF CASCADE COLONY SUBDIVISION

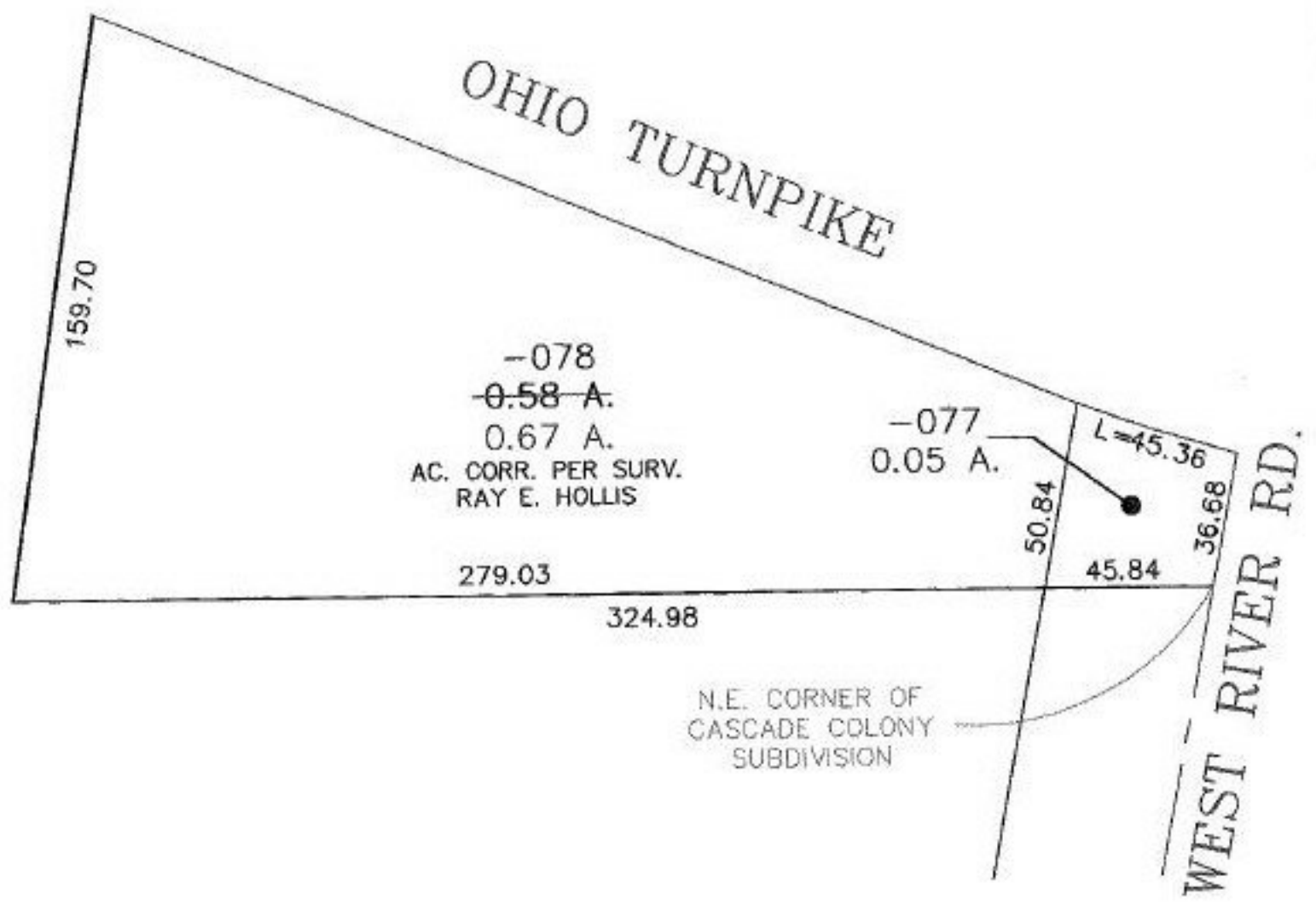
NO. 00622-C

ACREAGE CORR.

06-24-028-104-078

~~0.58~~ A.

0.67 A.



SPLITS/DEEDS PROCESSED
LORAIN COUNTY TAX MAP DEPARTMENT
226 MIDDLE AVE. ELYRIA, OHIO

SURVEYED BY: RAY E. HOLLIS
CLOSURE: 0.00 : 10.000
MAP PAGE(S): 6-83
APPROVED BY: TJS DATE: 11/9/01
SCALE: 1" = 50' PRIOR INSTRUMENT: DV 1383/810