

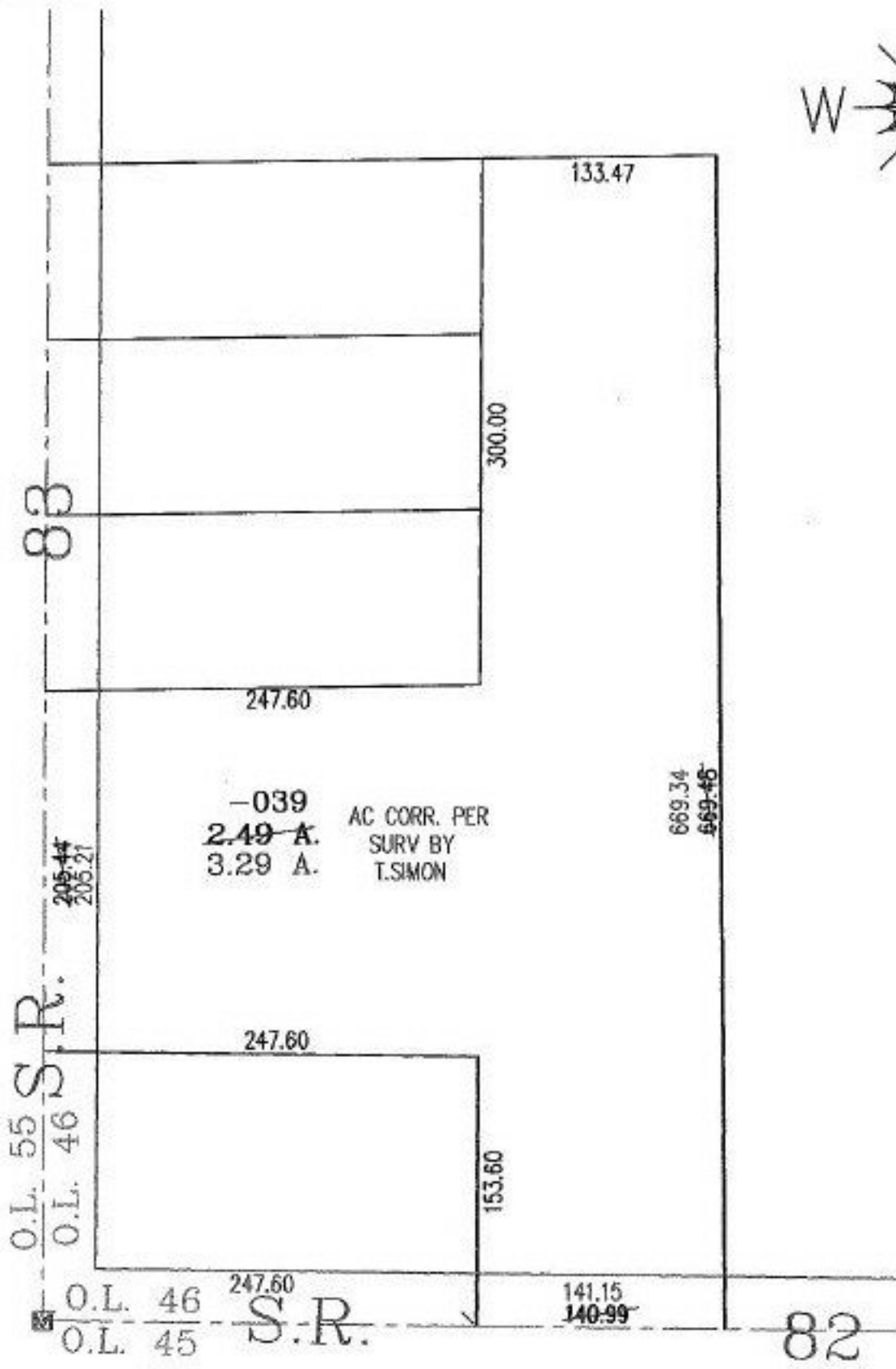
RASTER

PARENT PARCEL: 11-00-046-000-039

CHILD PARCEL:

STARTING POINT: AT A MON BOX AT THE INTERSECTION OF C/L OF SR 82
AND THE C/L OF C/L OF 83

NO. 00618-A



-039
2.49 A. AC CORR. PER
3.29 A. SURV BY
T.SIMON

O.L. 55 S.R.
O.L. 46

O.L. 46 247.60
O.L. 45 S.R.

82



SPLITS/DEEDS PROCESSED

LORAIN COUNTY TAX MAP DEPARTMENT
226 MIDDLE AVE. ELYRIA, OHIO

SURVEYED BY: T.SIMON
CLOSURE: N/A
MAP PAGE(S): 11-00-046-A
APPROVED BY: RRM DATE: 10-31-01
SCALE: 1" = 100' PRIOR INSTRUMENT: OR 639/237