

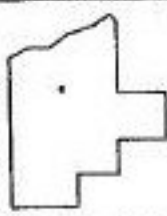
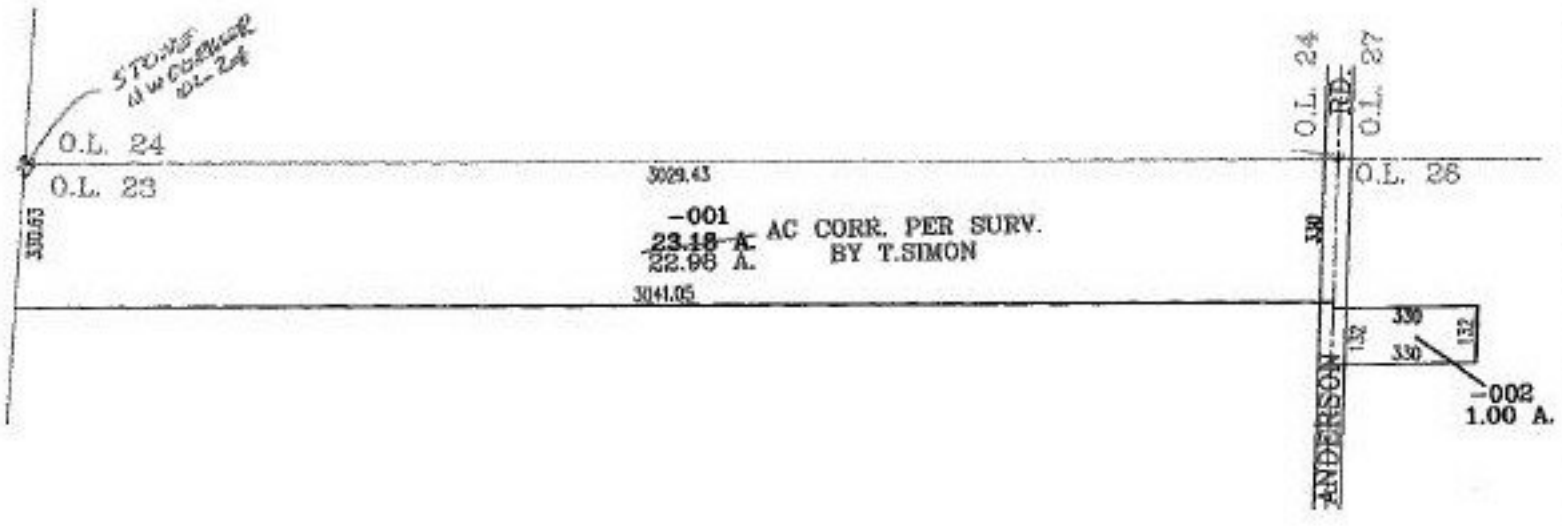
RASTER

PARENT PARCEL: 17-06-024-000-001

CHILD PARCEL:

STARTING POINT: NORTHEASTERLY CORNER OF O.L. 24

NO. 00601-A



SPLITS/DEEDS PROCESSED

LORAIN COUNTY TAX MAP DEPARTMENT
226 MIDDLE AVE. ELYRIA, OHIO

SURVEYED BY: T.SIMON

CLOSURE: 00:10.000

MAP PAGE(S): 17-G.17-H

APPROVED BY: RRM DATE: 10-9-01

SCALE: 1" = 500' PRIOR INSTRUMENT: 20010752868