

EASTER

PARENT PARCEL: 09-00-095-102-003,-004

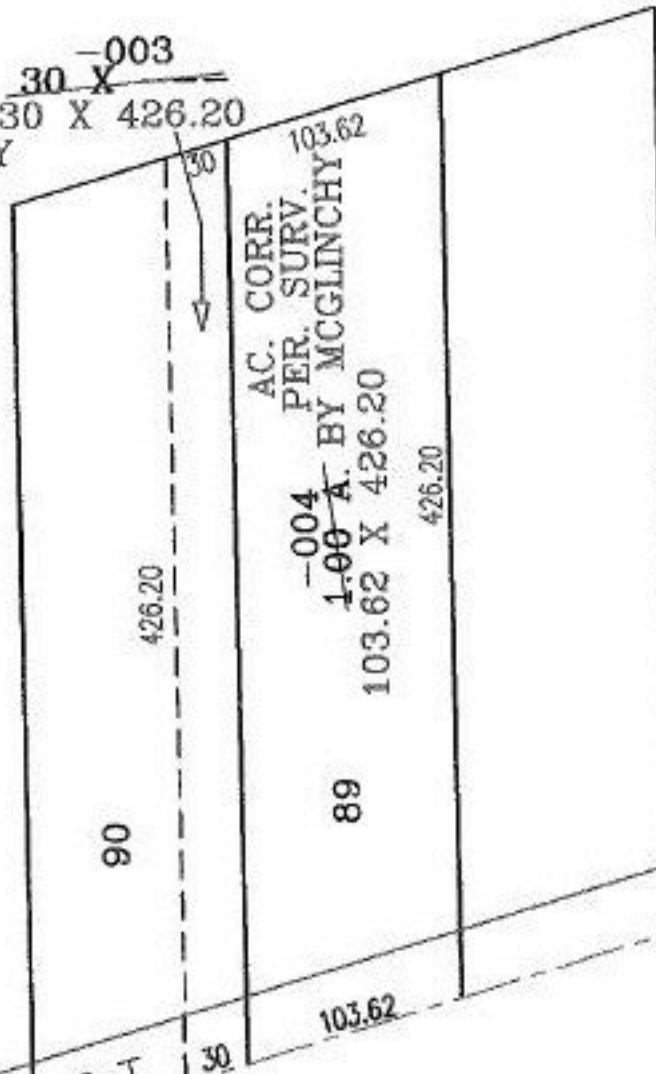
CHILD PARCEL:

STARTING POINT: INTERSECTION OF NORTHERLY LINE OF LINCOLN ST. AND SOUTHEAST CORNER OF LAND TO BERTHA TOWNSEL

NO. 00598-C



AC. CORR. $30 \times \frac{-003}{426.20}$
PER. SURV. 30 X 426.20
BY MCGLINCHY



AC. CORR. $103.62 \times \frac{-004}{426.20}$
PER. SURV. 103.62 X 426.20
BY MCGLINCHY

~~1.00~~ A. BY MCGLINCHY

426.20

90

89

ST.

LINCOLN

PART OF:

FOLLET'S SECOND ADD.

VOL. 3

PG. 9



SPLITS/DEEDS PROCESSED

LORAIN COUNTY TAX MAP DEPARTMENT
226 MIDDLE AVE. ELYRIA, OHIO

SURVEYED BY: MCGLINCHY & ASSOC.

CLOSURE: 00:10.000

MAP PAGE(S): 9-00-095-A

APPROVED BY: RRM DATE: 9-20-01

SCALE: 1" = 100 PRIOR INSTRUMENT: 20010748173