

RASTER

PARENT PARCEL: 06-25-023-105-034

CHILD PARCEL: 06-25-023-105-040

STARTING POINT: NORTH LINE OF CLEVELAND ST. & WEST LINE OF OAK DR.

NO. 00596-C

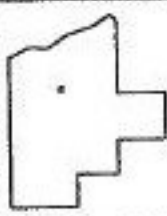
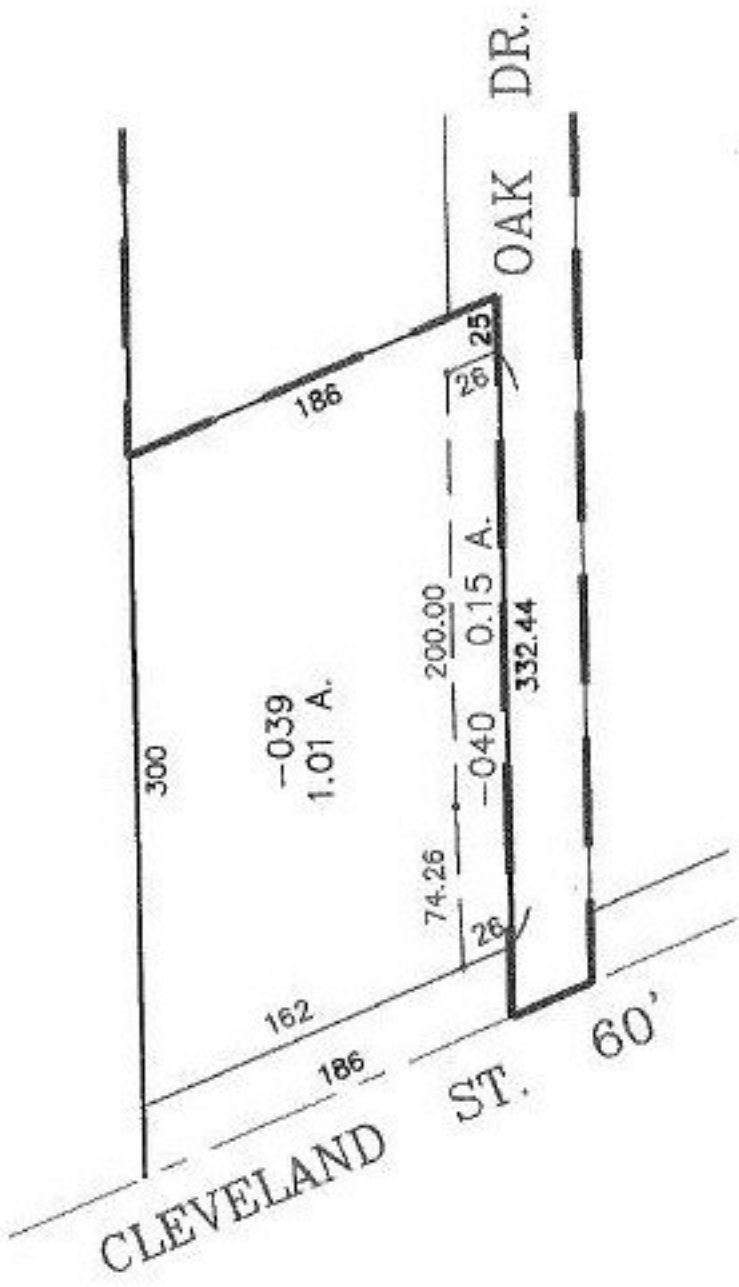
PARCEL NUMBER & MAP CORR.

FOR TAX MAP DEPT.

ADD TO DUP.

FOR TRANSFER OFFICE

SEE #16244 FOR MISTAKE



SPLITS/DEEDS PROCESSED

LORAIN COUNTY TAX MAP DEPARTMENT  
226 MIDDLE AVE. ELYRIA, OHIO

SURVEYED BY: J. W. WARDEN  
CLOSURE: 7.97 : 10.000  
MAP PAGE(S): 6-89  
APPROVED BY: TJS DATE: 8/30/01  
SCALE: 1" = 100' PRIOR INSTRUMENT: DV 1339/934