

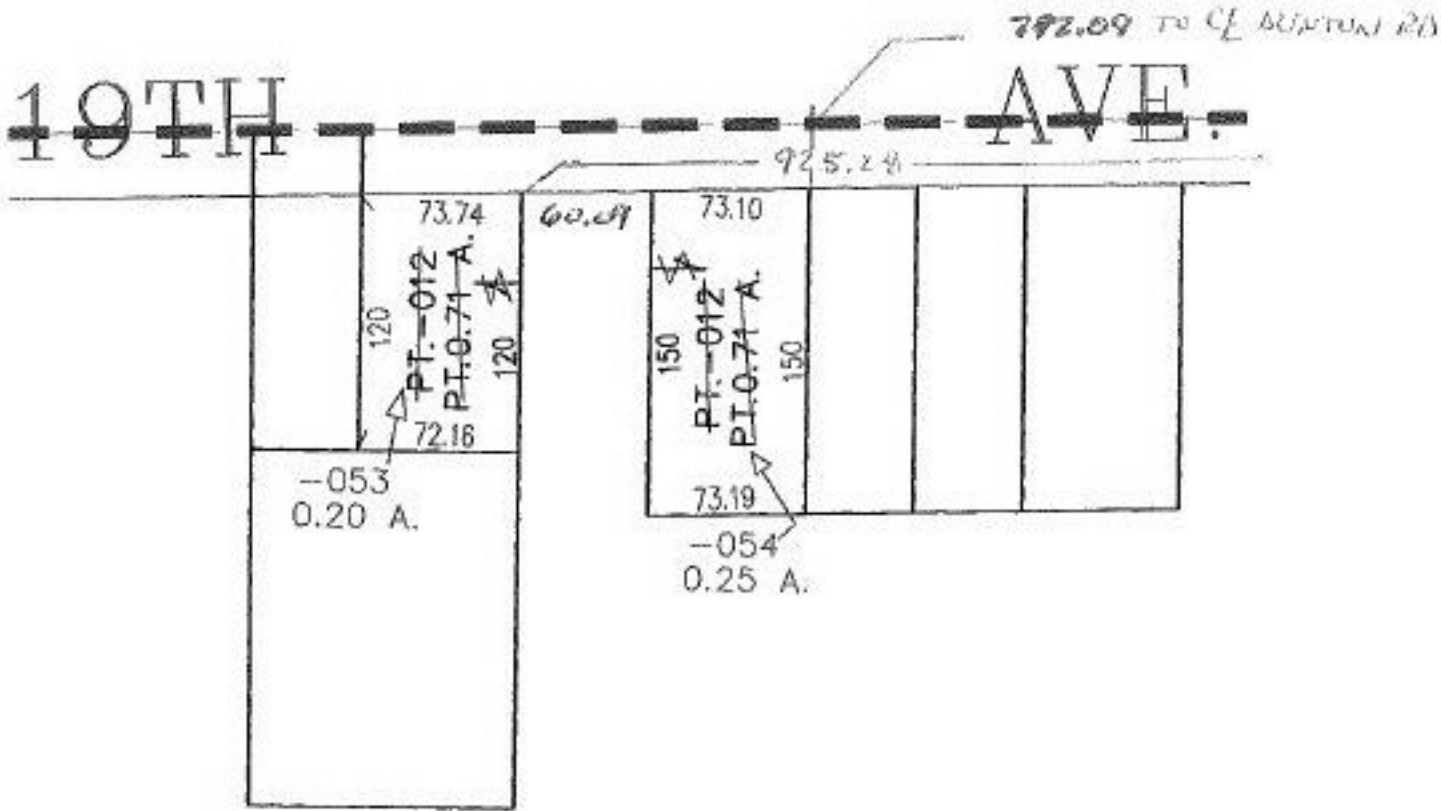
RASTER

PARENT PARCEL: 03-00-102-115-012
CHILD PARCEL: 03-00-102-115-053-054
STARTING POINT: INTERSECTION OF DUNTON RD. AND SOUTH LINE OF SHEFFIELD LAND
AND IMPROVEMENT COMPANY SUB. NO. 8

NO. 00588-U



UNCOMBINATION



SPLITS/DEEDS PROCESSED
LORAIN COUNTY TAX MAP DEPARTMENT
226 MIDDLE AVE. ELYRIA, OHIO

SURVEYED BY: R.HOLLIS
CLOSURE: N/A
MAP PAGE(S): 3-00-102-A
APPROVED BY: RRM DATE: 8-22-01
SCALE: 1" = 100' PRIOR INSTRUMENT: DV 1228/718