

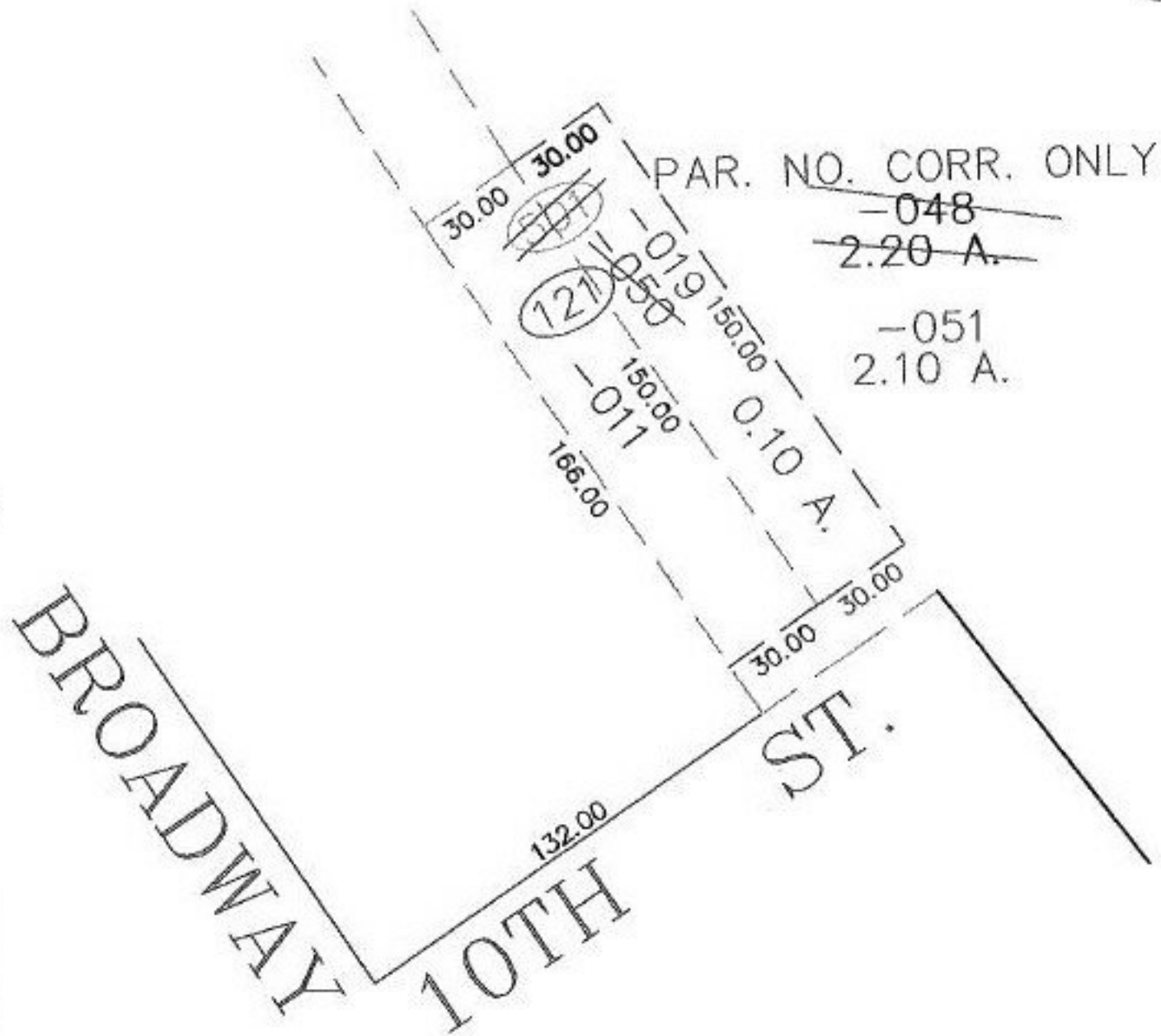
NOT FILED

PARENT PARCEL: 02-01-003-501-050

CHILD PARCEL: 02-01-003-121-019

STARTING POINT: SE CORNER OF BROADWAY AND 10TH ST.

NO. 00577-X



SPLITS/DEEDS PROCESSED
 LORAIN COUNTY TAX MAP DEPARTMENT
 226 MIDDLE AVE. ELYRIA, OHIO

SURVEYED BY: N/A
 CLOSURE: N/A
 MAP PAGE(S): 02-01-003-C
 APPROVED BY: RRM DATE: 7-23-01
 SCALE: 1" = 50' PRIOR INSTRUMENT: 20010763977