

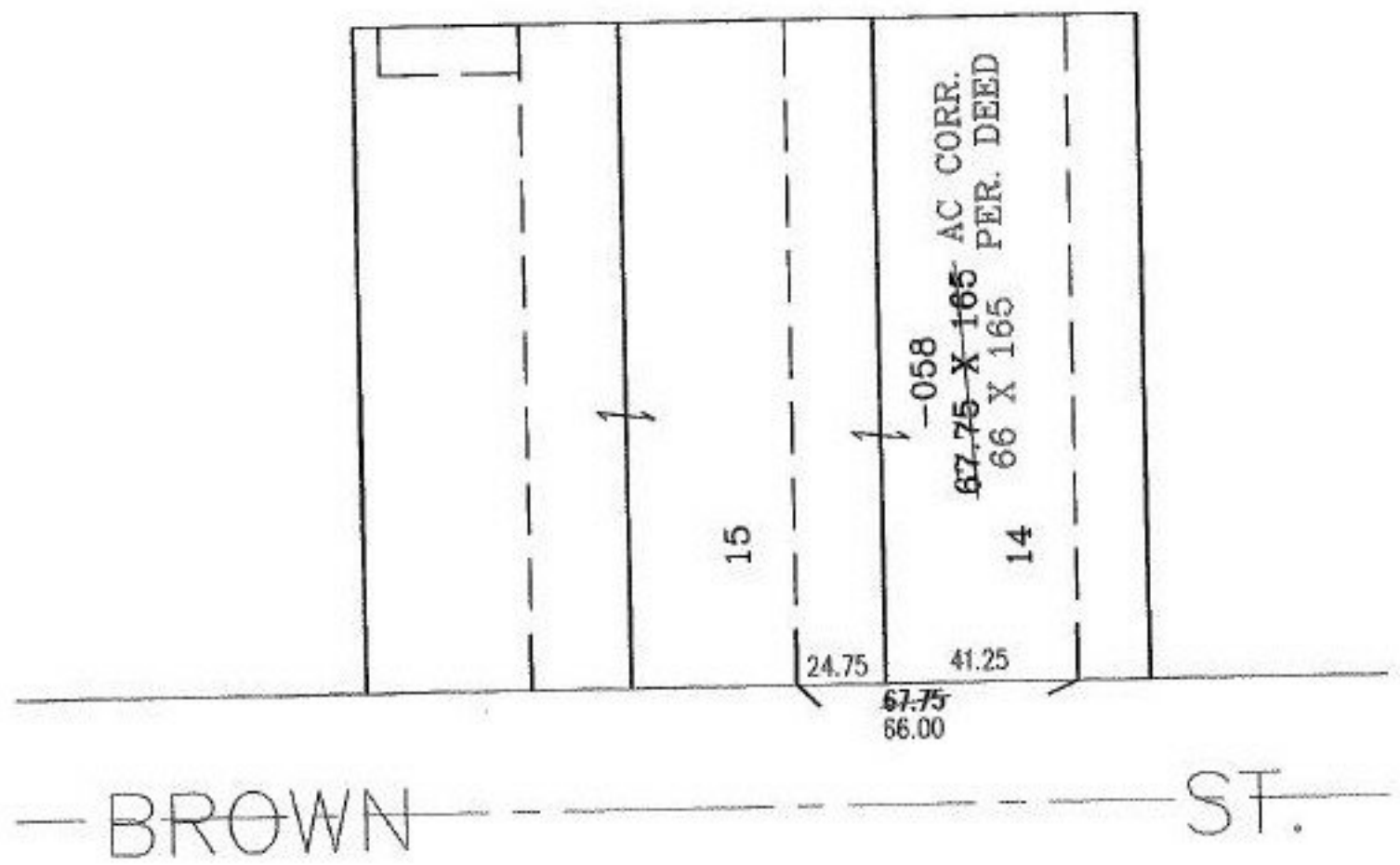
RASTER

PARENT PARCEL: 18-00-021-112-058  
CHILD PARCEL:  
STARTING POINT: N/A

NO. 00569-X



FRONTAGE CORR.



**SPLITS/DEEDS PROCESSED**  
LORAIN COUNTY TAX MAP DEPARTMENT  
226 MIDDLE AVE. ELYRIA, OHIO

SURVEYED BY: DEED  
CLOSURE: N/A  
MAP PAGE(S): 18-00-021-C & D  
APPROVED BY: BRM DATE: 8-28-01  
SCALE: 1" = 50' PRIOR INSTRUMENT: 20010767484