

RASTER

PARENT PARCEL: 03-00-007-101-056

CHILD PARCEL:

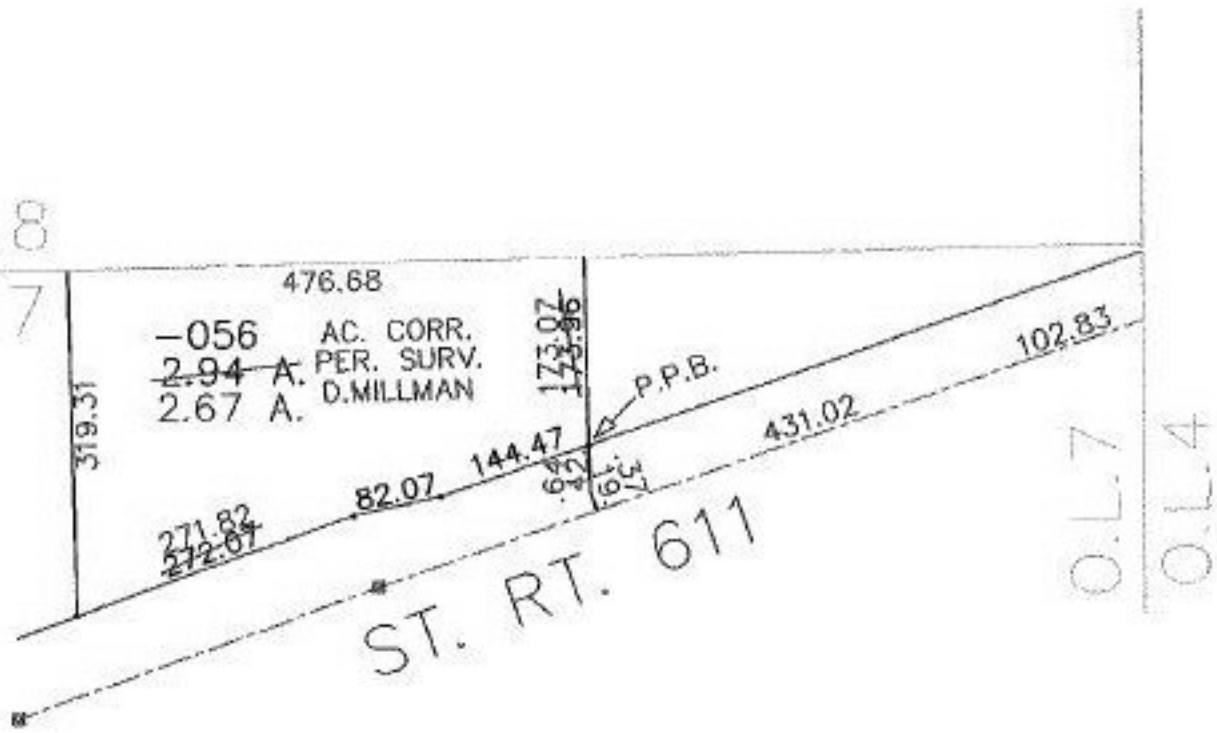
STARTING POINT: INTERSECTION OF EAST LINE OF O.L. 7 AND C/L. OF S.R. 611

NO. 00567-D



O.L. 8

O.L. 7



O.L. 7

O.L. 4



**SPLITS/DEEDS PROCESSED**  
**LORAIN COUNTY TAX MAP DEPARTMENT**  
 226 MIDDLE AVE. ELYRIA, OHIO

SURVEYED BY: D. MILLMAN  
 CLOSURE: \_\_\_\_\_  
 MAP PAGE(S): 3-00-007-B  
 APPROVED BY: RRM DATE: 6-21-01  
 SCALE: 1" = 200' PRIOR INSTRUMENT: OR 906/843