

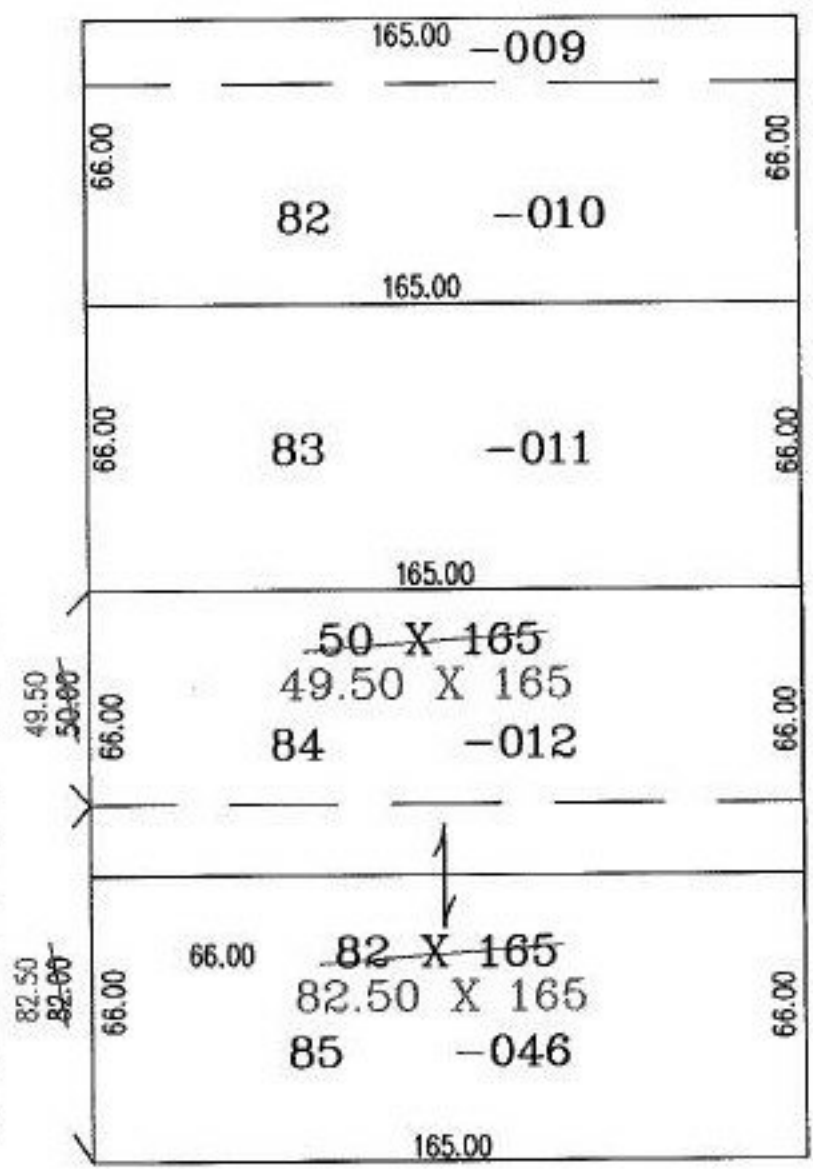
EASTER

PARENT PARCEL: 18-00-022-109-012,-046  
CHILD PARCEL:  
STARTING POINT: N/A

NO. 00562-D



COURTLAND ST.



**SPLITS/DEEDS PROCESSED**  
LORAIN COUNTY TAX MAP DEPARTMENT  
226 MIDDLE AVE. ELYRIA, OHIO

SURVEYED BY: DEED  
CLOSURE: N/A  
MAP PAGE(S): 18-00-022-A  
APPROVED BY: RRM DATE: 8-24-01  
SCALE: 1" = 50' PRIOR INSTRUMENT: 970479819