

RASIER

PARENT PARCEL: 06-24-025-105-026

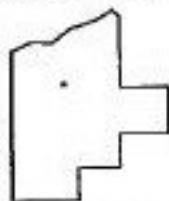
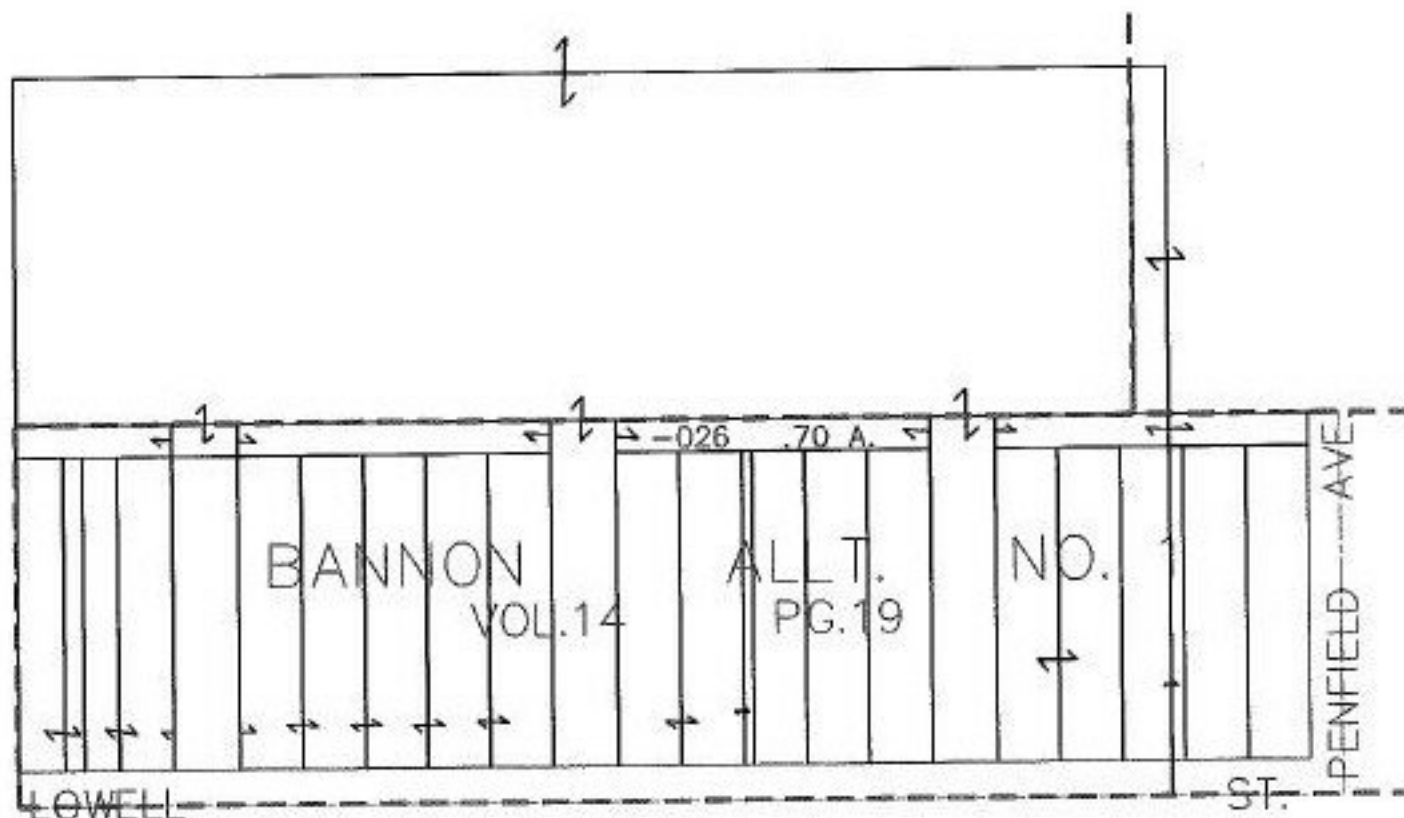
CHILD PARCEL:

STARTING POINT:

NO. 00546-X



ADD TO DUP



SPLITS/DEEDS PROCESSED

LORAIN COUNTY TAX MAP DEPARTMENT
226 MIDDLE AVE. ELYRIA, OHIO

SURVEYED BY: JOHN W. WARDEN

CLOSURE: N/A

MAP PAGE(S): 6-96

APPROVED BY: RRM DATE: 4-30-01

SCALE: 1" = 200' PRIOR INSTRUMENT: DV 519/223