

RASTER

PARENT PARCEL: 03-00-012-000-167

CHILD PARCEL: XX-XX-XXX-XXX-XXX

STARTING POINT: S/L 5 IN SHEFFIELD CROSSINGS SUBDIVISION

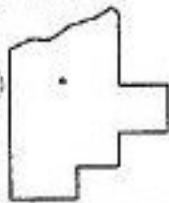
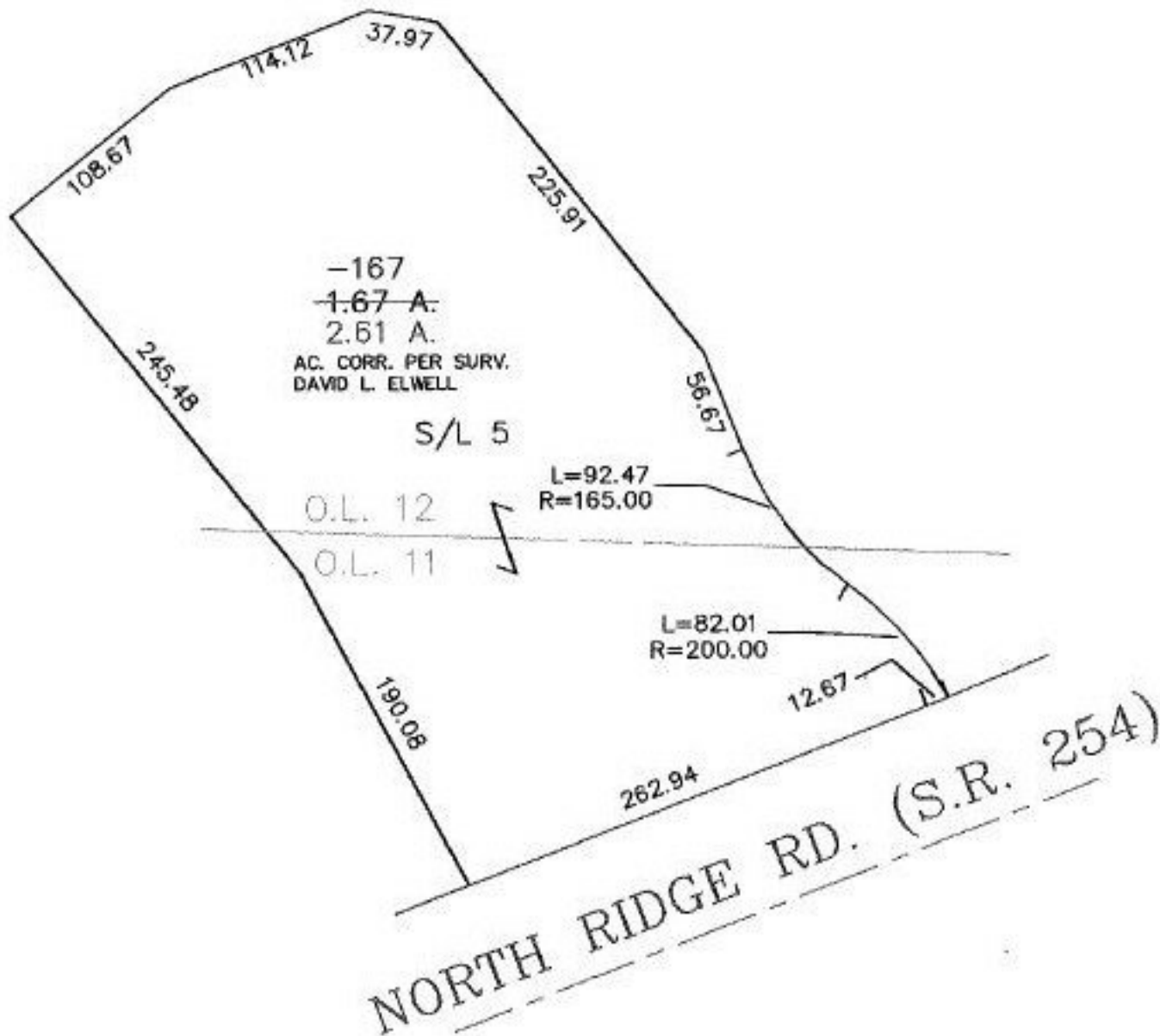
NO. 00542-A

ACREAGE CORRECTION

03-00-012-000-167

~~1.67 A.~~

2.61 A.



SPLITS/DEEDS PROCESSED

LORAIN COUNTY TAX MAP DEPARTMENT
226 MIDDLE AVE. ELYRIA, OHIO

SURVEYED BY: DAVID L. ELWELL

CLOSURE: 0.01 : 10.000

MAP PAGE(S): 3-00-012-B

APPROVED BY: TJS DATE: 03/28/01

SCALE: 1" = 100' PRIOR INSTRUMENT: NA