

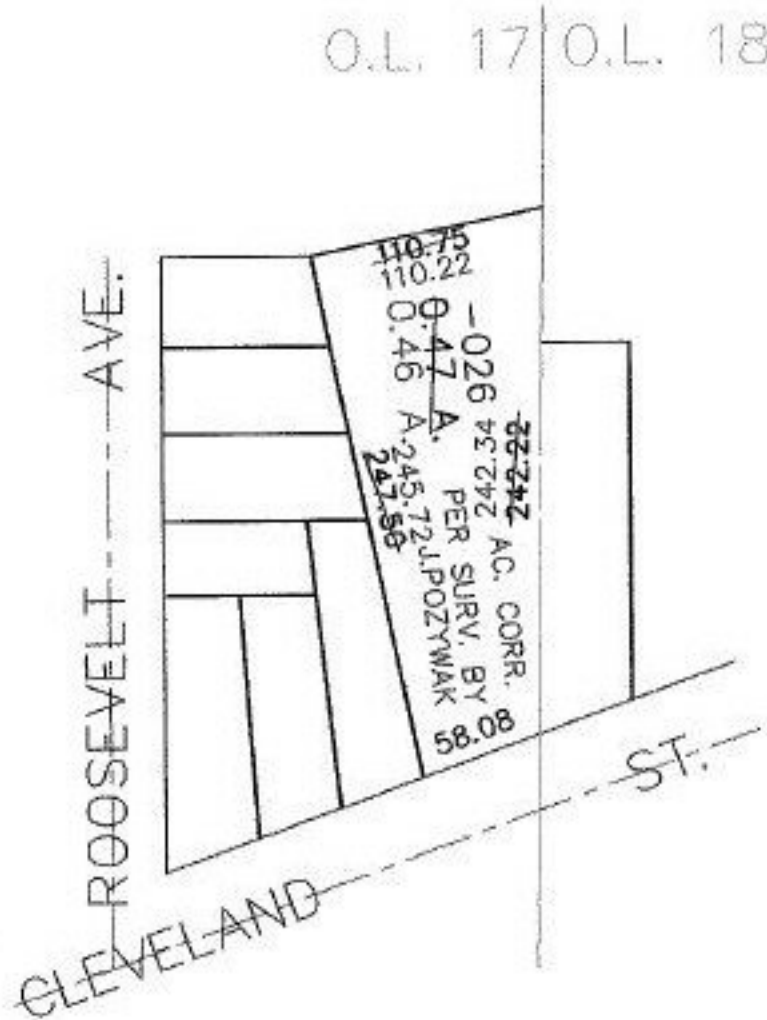
RASTER

PARENT PARCEL: 06-25-017-110-026

CHILD PARCEL:

STARTING POINT: INTERSECTION OF EAST LINE OF O.L.17 AND NORTERLEY ROW LINE OF CLEVELAND ST.

NO. 00540-X



SPLITS/DEEDS PROCESSED

LORAIN COUNTY TAX MAP DEPARTMENT
226 MIDDLE AVE. ELYRIA, OHIO

SURVEYED BY: J. POZYWAK
 CLOSURE: N/A
 MAP PAGE(S): 6-105
 APPROVED BY: RRM DATE: 3-22-01
 SCALE: 1" = 100' PRIOR INSTRUMENT: DV XXXX/XXX