

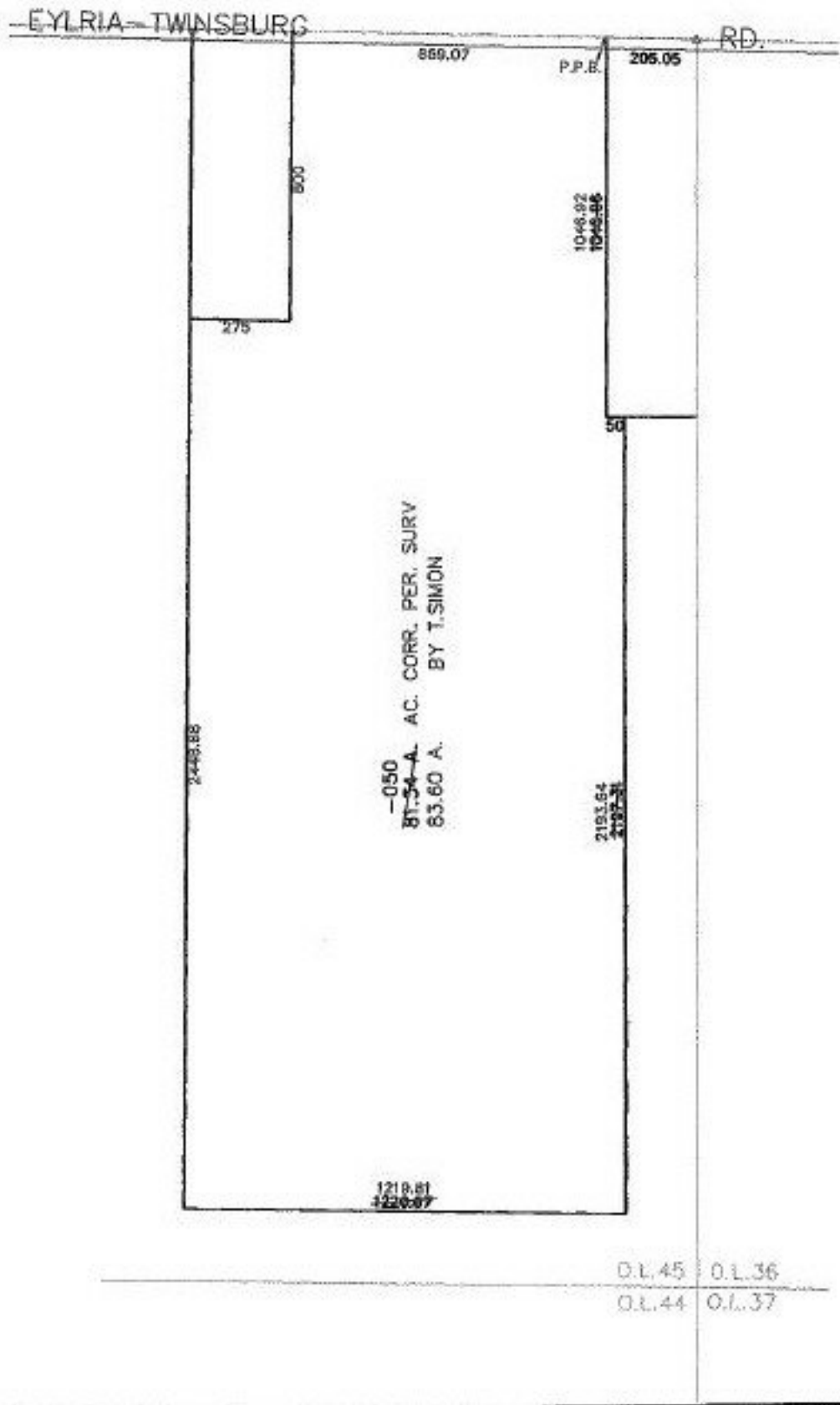
PASIKR

PARENT PARCEL: 11-00-045-000-050

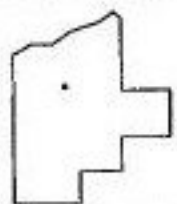
CHILD PARCEL:

STARTING POINT: AT A R.R.S. AT THE NORTHEASTERLY CORNER OF O.L. 45

NO. 00535-A



O.L. 45 O.L. 36
 O.L. 44 O.L. 37



SPLITS/DEEDS PROCESSED

LORAIN COUNTY TAX MAP DEPARTMENT
 226 MIDDLE AVE. ELYRIA, OHIO

SURVEYED BY: T.SIMON
 CLOSURE: N/A
 MAP PAGE(S): 11-G NORTH
 APPROVED BY: RRM DATE: 3-14-01
 SCALE: 1" = 500 PRIOR INSTRUMENT: 970496839