

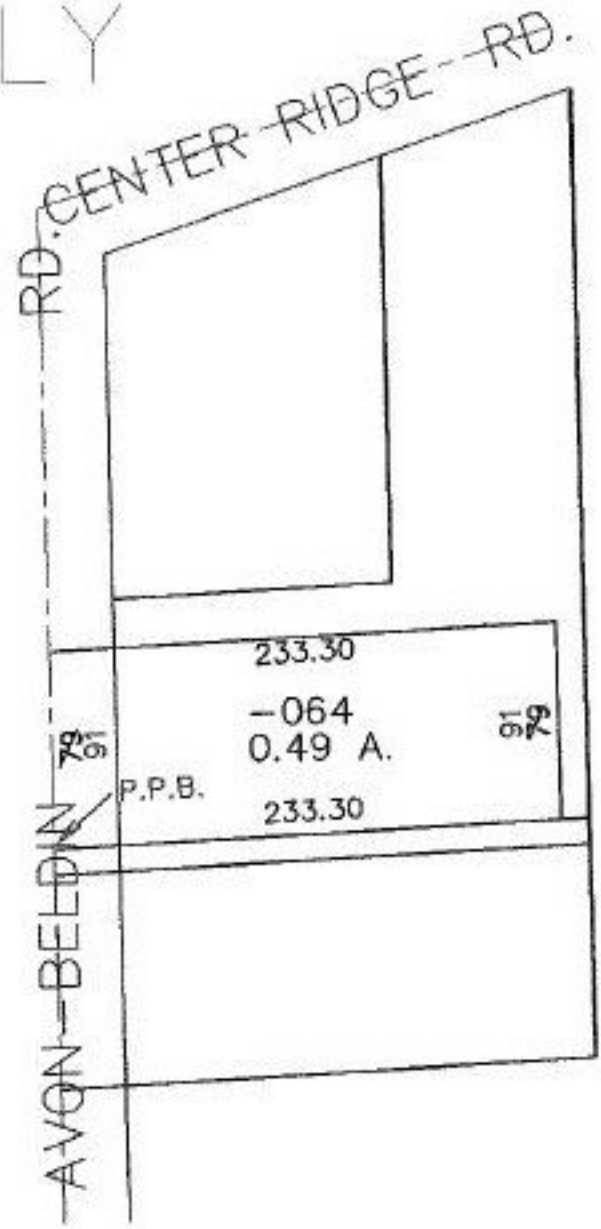
RASTER

PARENT PARCEL: 07-00-021-117-064  
CHILD PARCEL:  
STARTING POINT: INTERSECTION OF CENTERLINE OF AVON- BELDEN RD. AND AT THE NORTHWEST CORNER OF P.P.N. 07-00-021-117-063

NO. 00533-A



MAP CORR.  
ONLY



**SPLITS/DEEDS PROCESSED**  
LORAIN COUNTY TAX MAP DEPARTMENT  
226 MIDDLE AVE. ELYRIA, OHIO

SURVEYED BY: J.W. WARDEN  
CLOSURE: 00:10.000  
MAP PAGE(S): 7-00-021-C  
APPROVED BY: RRM DATE: 3-19-01  
SCALE: 1" = 100' PRIOR INSTRUMENT: DV 926/470