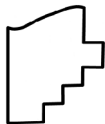
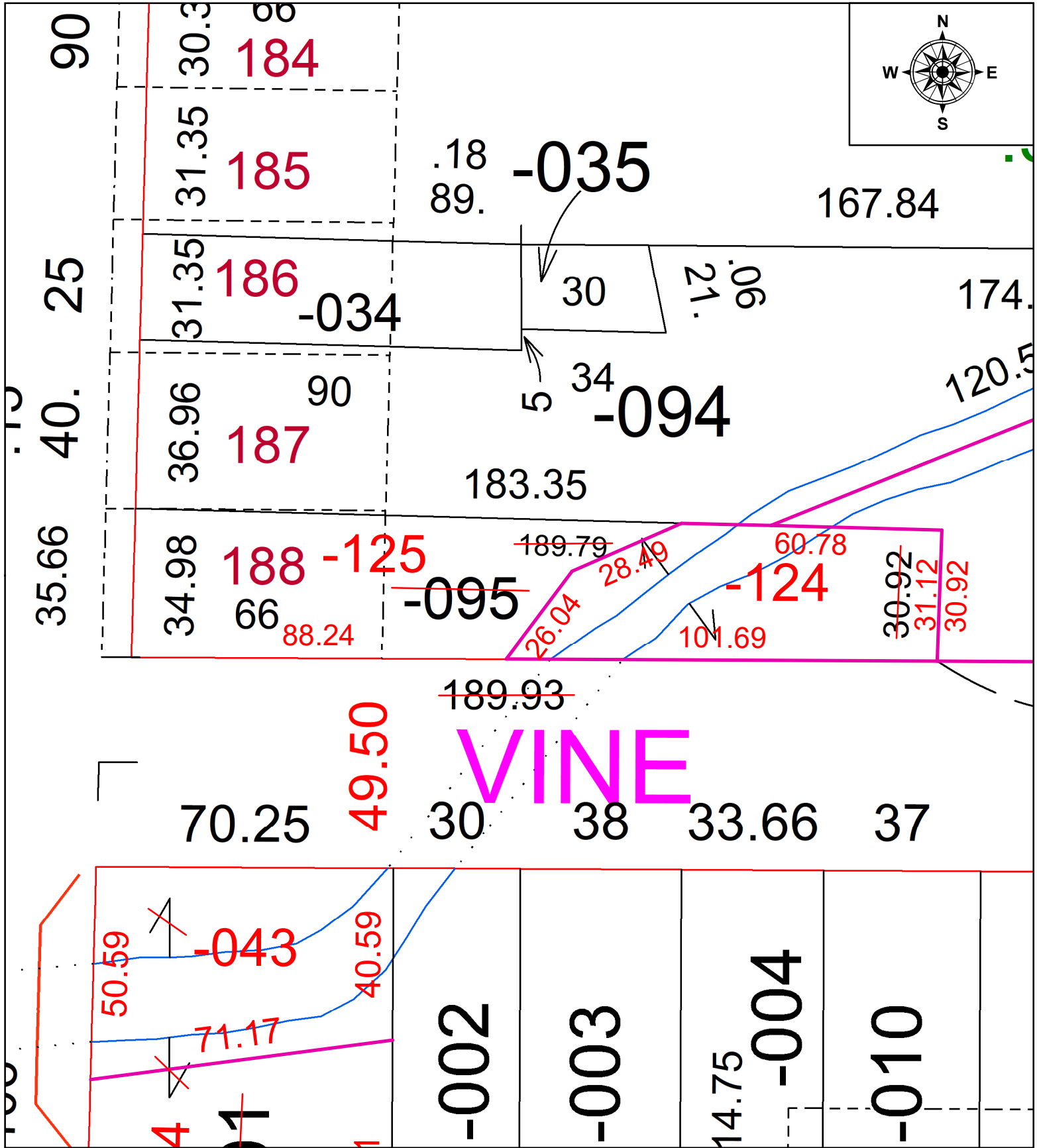
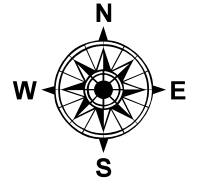


PARENT PARCEL: 09-00-086-102-095

CHILD PARCEL: 09-00-086-102-124 & -125

STARTING POINT: INT. OF THE NORTH LINE OF EAST VINE ST. & EAST LINE OF SOUTH MAIN ST.

24-00793



SPLITS/DEEDS PROCESSED
LORAIN COUNTY TAX MAP DEPARTMENT
226 MIDDLE AVE. ELYRIA, OH

SURVEYED BY: MICHAEL J. WARD
CLOSURE: 1: INF
MAP PAGE(S): 09-00-086
APPROVED BY: TJS DATE: 3/21/2024
SCALE: 1" = 30' PRIOR INSTRUMENT: 2018-0670409