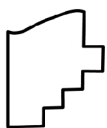
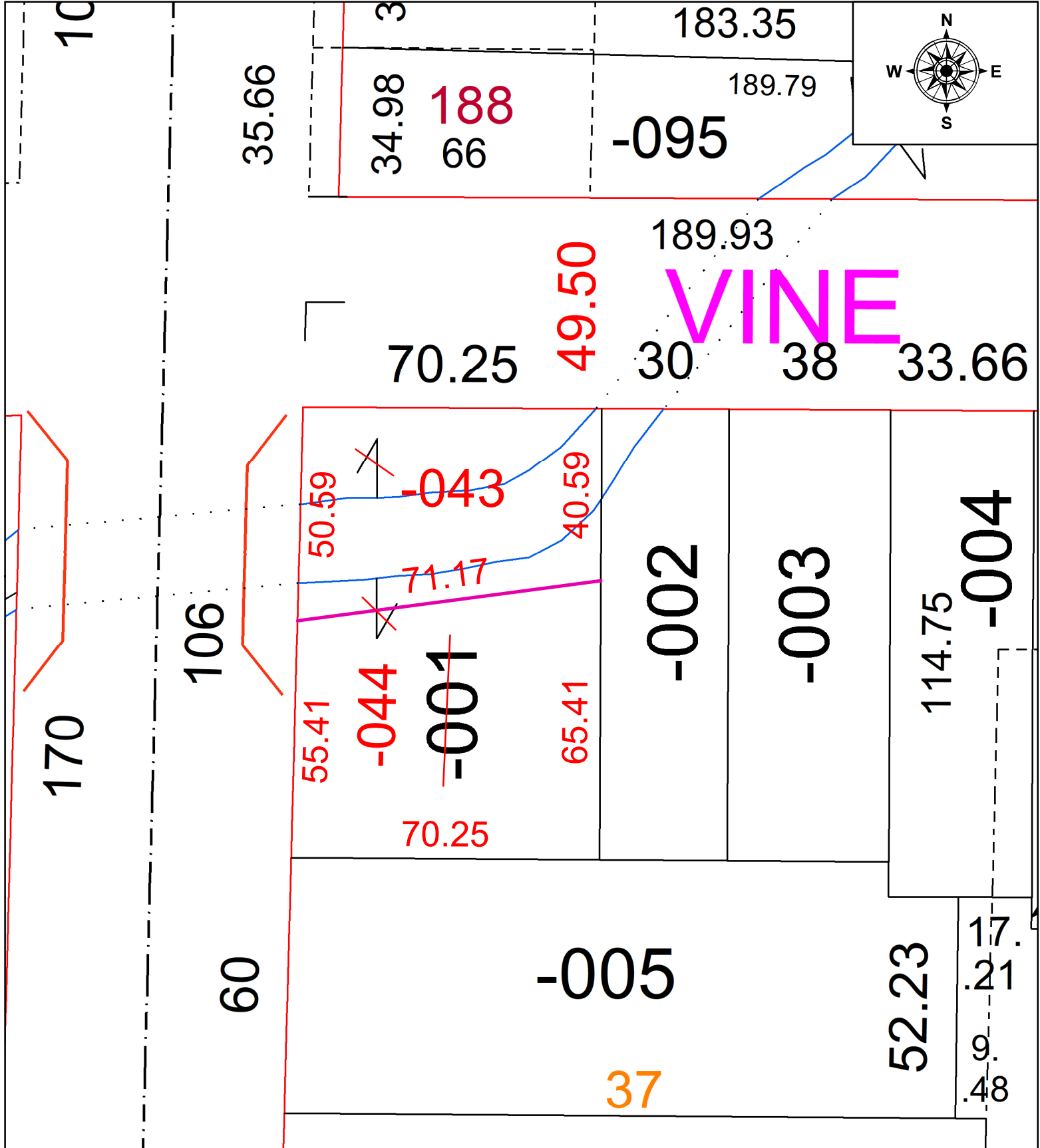


PARENT PARCEL: 09-00-086-103-001

CHILD PARCEL: 09-00-086-103-043 & -044

STARTING POINT: I.P. SET, INT. OF THE SOUTH LINE OF EAST VINE ST. & EAST LINE OF SOUTH MAIN ST. (S.R. 58)

24-00792



**SPLITS/DEEDS PROCESSED**  
 LORAIN COUNTY TAX MAP DEPARTMENT  
 226 MIDDLE AVE. ELYRIA, OH

SURVEYED BY: MICHAEL WARD  
 CLOSURE: 1:60532  
 MAP PAGE(S): 09-00-086  
 APPROVED BY: TJS DATE: 3/18/2024  
 SCALE: 1" = 30' PRIOR INSTRUMENT: 1997-0495267