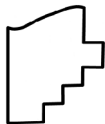
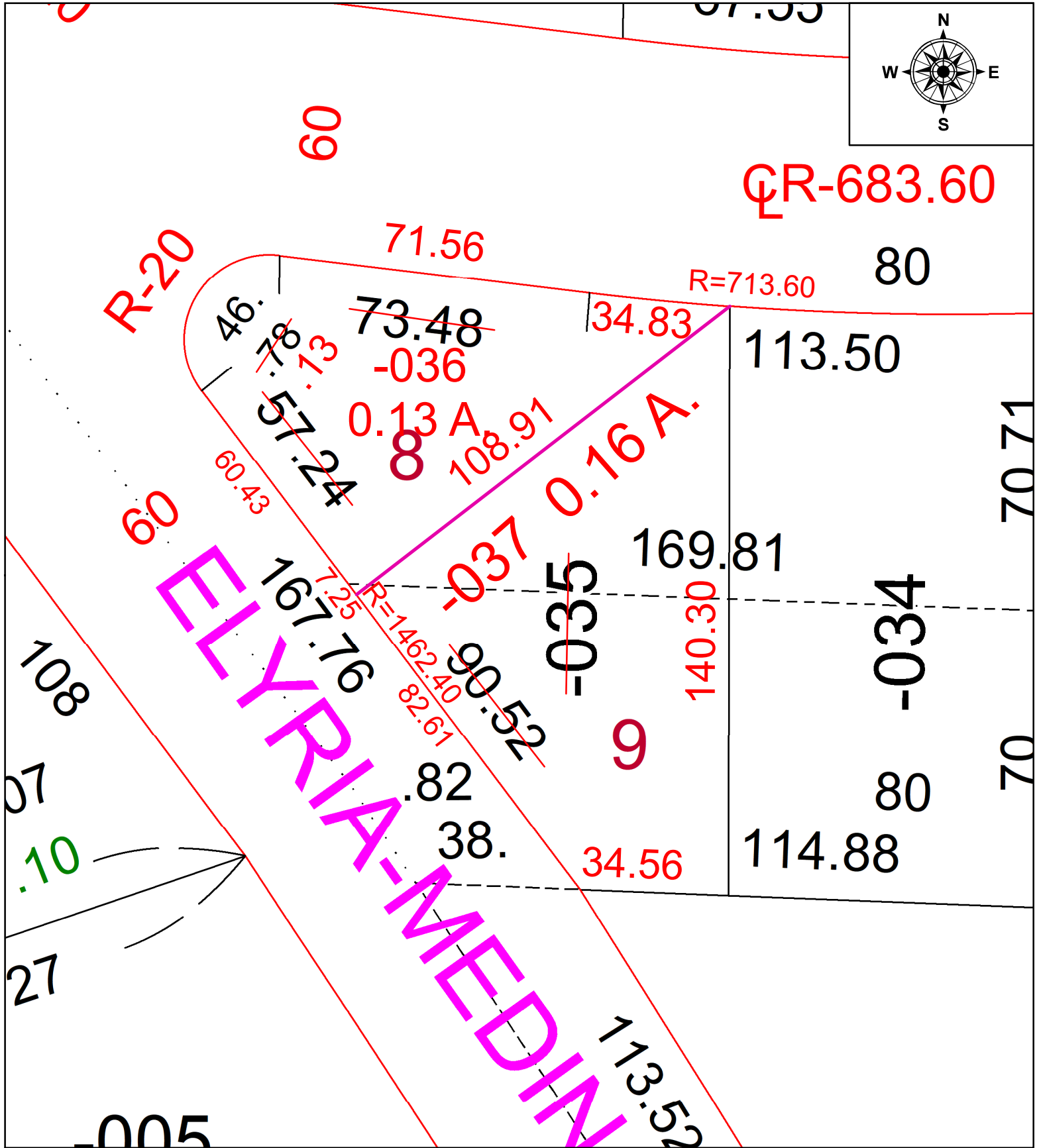
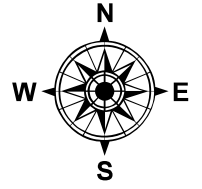


PARENT PARCEL: 16-00-003-105-035

CHILD PARCEL: 16-00-003-105-036 & -037

STARTING POINT: I.P. FOUND, N.W. CORNER OF SUBLOT 12 IN GRAFTON REALTY CO. SUB. NO.1 (PV. 1, PG. 24)

22-00788



**SPLITS/DEEDS PROCESSED**  
LORAIN COUNTY TAX MAP DEPARTMENT  
226 MIDDLE AVE. ELYRIA, OH

SURVEYED BY: KEVIN CANAVAN  
CLOSURE: 1:60,000  
MAP PAGE(S): 16-00-003  
APPROVED BY: TJS DATE: 1/6/2023  
SCALE: 1" = 30' PRIOR INSTRUMENT: DV 13 PG, 24