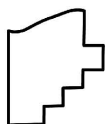
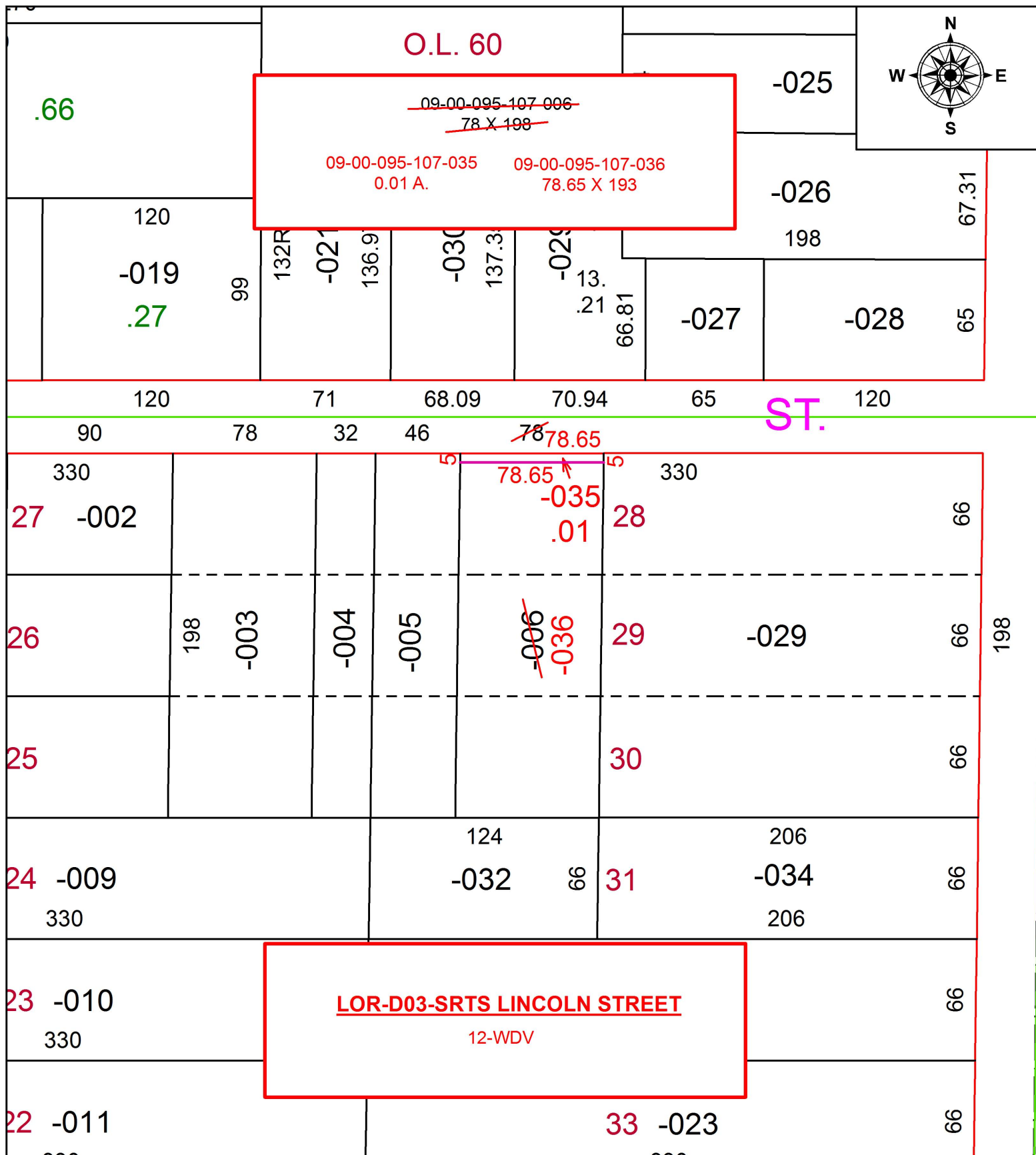


PARENT PARCEL: 09-00-095-107-006

CHILD PARCEL: 09-00-095-107-035, -036

16-00751

STARTING POINT: INTERSECTION OF C/L OF LINCOLN ST. AND C/L OF S.PROFESSOR ST.



SPLITS/DEEDS PROCESSED
LORAIN COUNTY TAX MAP DEPARTMENT
226 MIDDLE AVE. ELYRIA, OH

SURVEYED BY: TREVOR A. BIXLER
 CLOSURE: 1: 146,251
 MAP PAGE(S): 9-00-095
 APPROVED BY: RRM DATE: 10-18-16
 SCALE: 1" = 70' PRIOR INSTRUMENT: 20100343537