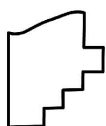
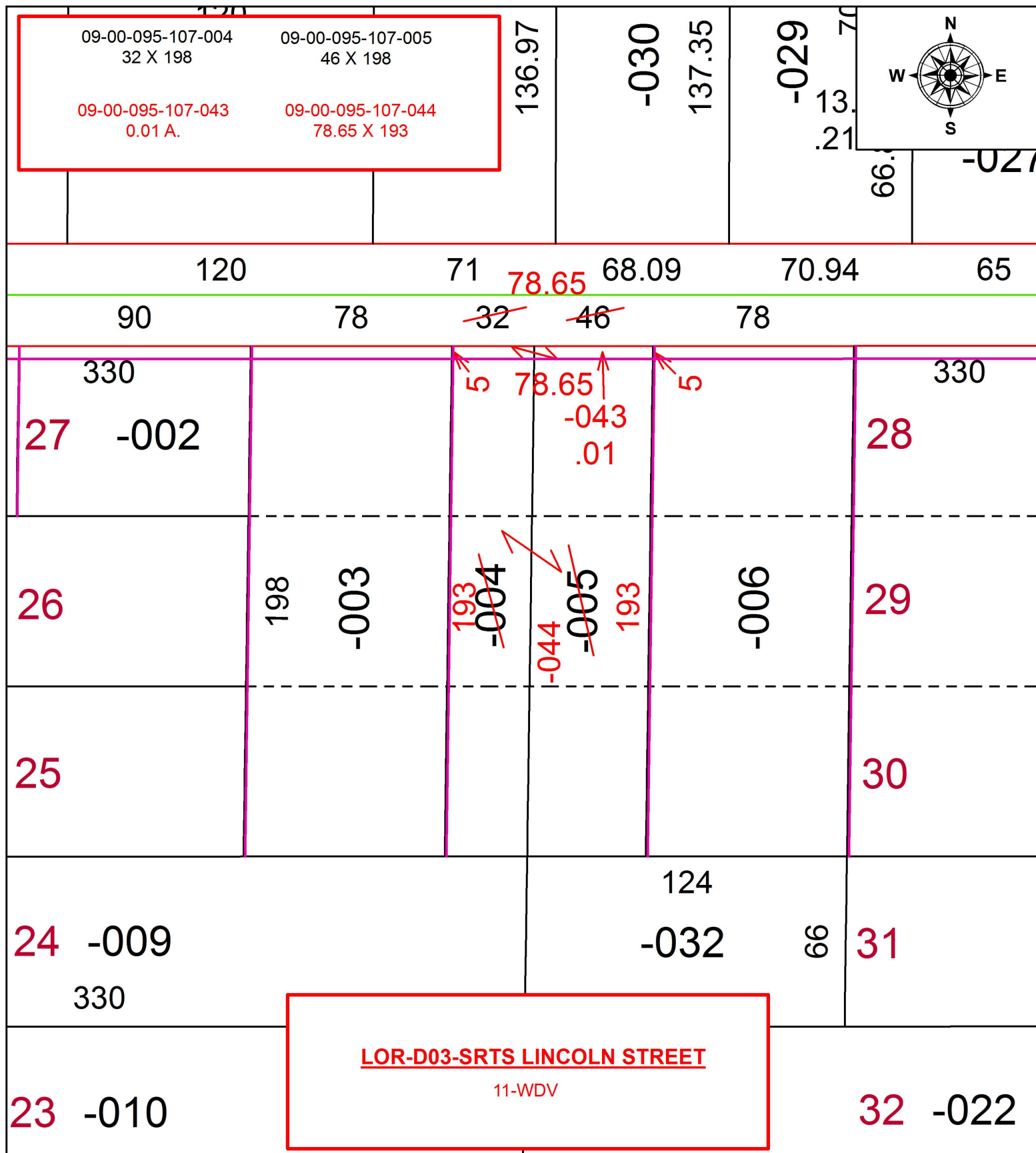


PARENT PARCEL: 09-00-095-107-004, -005

CHILD PARCEL: 09-00-095-107-043, -044

16-00750

STARTING POINT: INTERSECTION OF C/L OF LINCOLN ST. AND C/L OF S. PROFESSOR ST.



SPLITS/DEEDS PROCESSED
LORAIN COUNTY TAX MAP DEPARTMENT
226 MIDDLE AVE. ELYRIA, OH

SURVEYED BY:	TREVOR A. BIXLER
CLOSURE:	1:2147483648
MAP PAGE(S):	9-00-095
APPROVED BY:	RRM DATE: 10-21-16
SCALE:	1" = 50
PRIOR INSTRUMENT:	20050064772