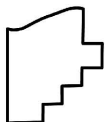
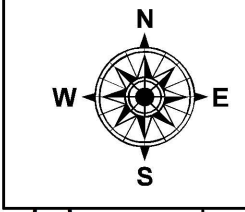
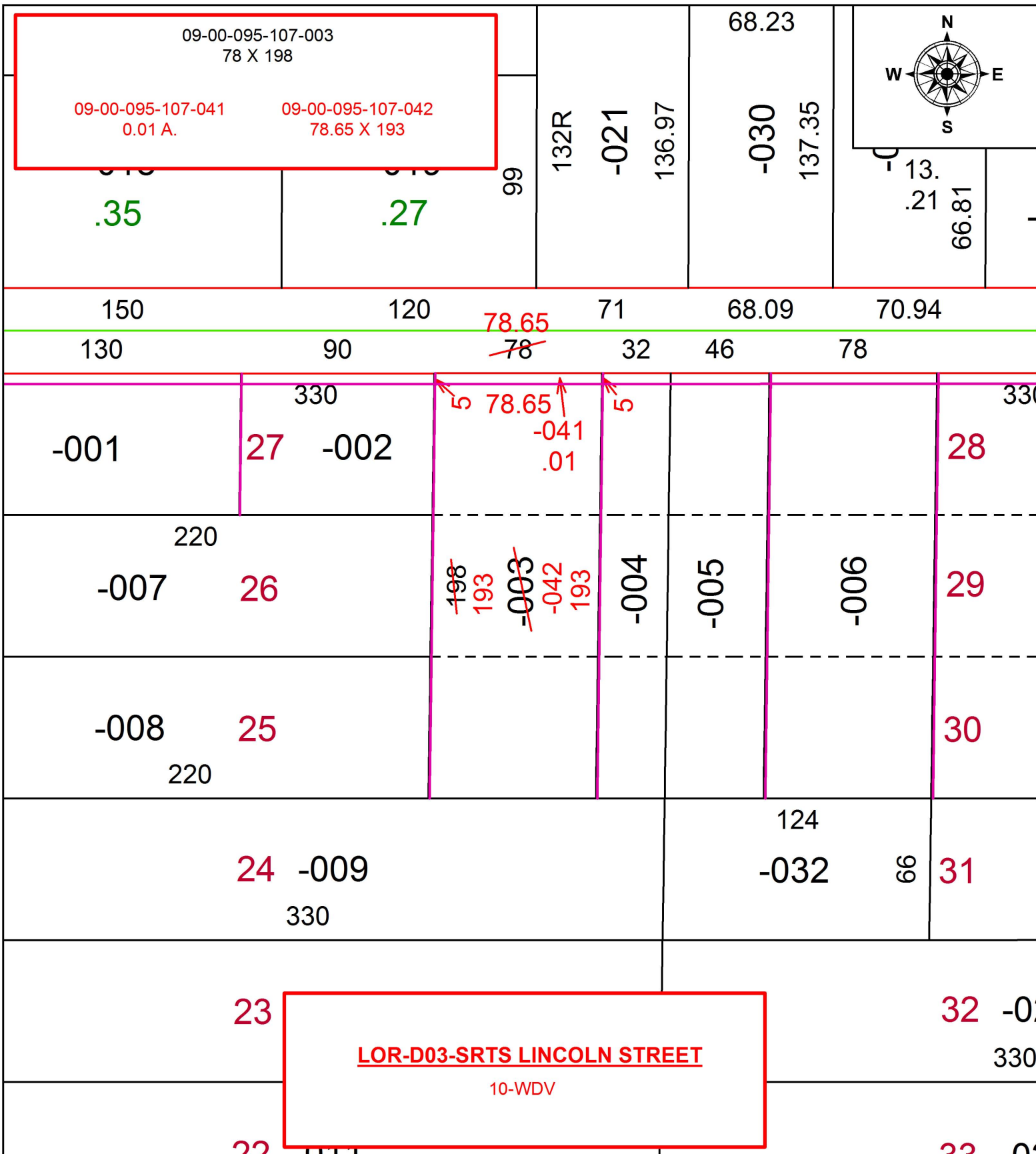


PARENT PARCEL: 09-00-095-107-003

CHILD PARCEL: 09-00-095-107-041, -042

16-00749

STARTING POINT: INTERSECTION OF C/L OF LINCOLN ST. AND C/L OF S. PROFESSOR ST.



**SPLITS/DEEDS PROCESSED**  
LORAIN COUNTY TAX MAP DEPARTMENT  
226 MIDDLE AVE. ELYRIA, OH

SURVEYED BY: TREVOR A. BIXLER  
CLOSURE: 1:2147483648  
MAP PAGE(S): 9-00-095  
APPROVED BY: RRM DATE: 10-21-16  
SCALE: 1" = 60' PRIOR INSTRUMENT: 20090280872