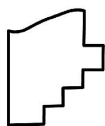
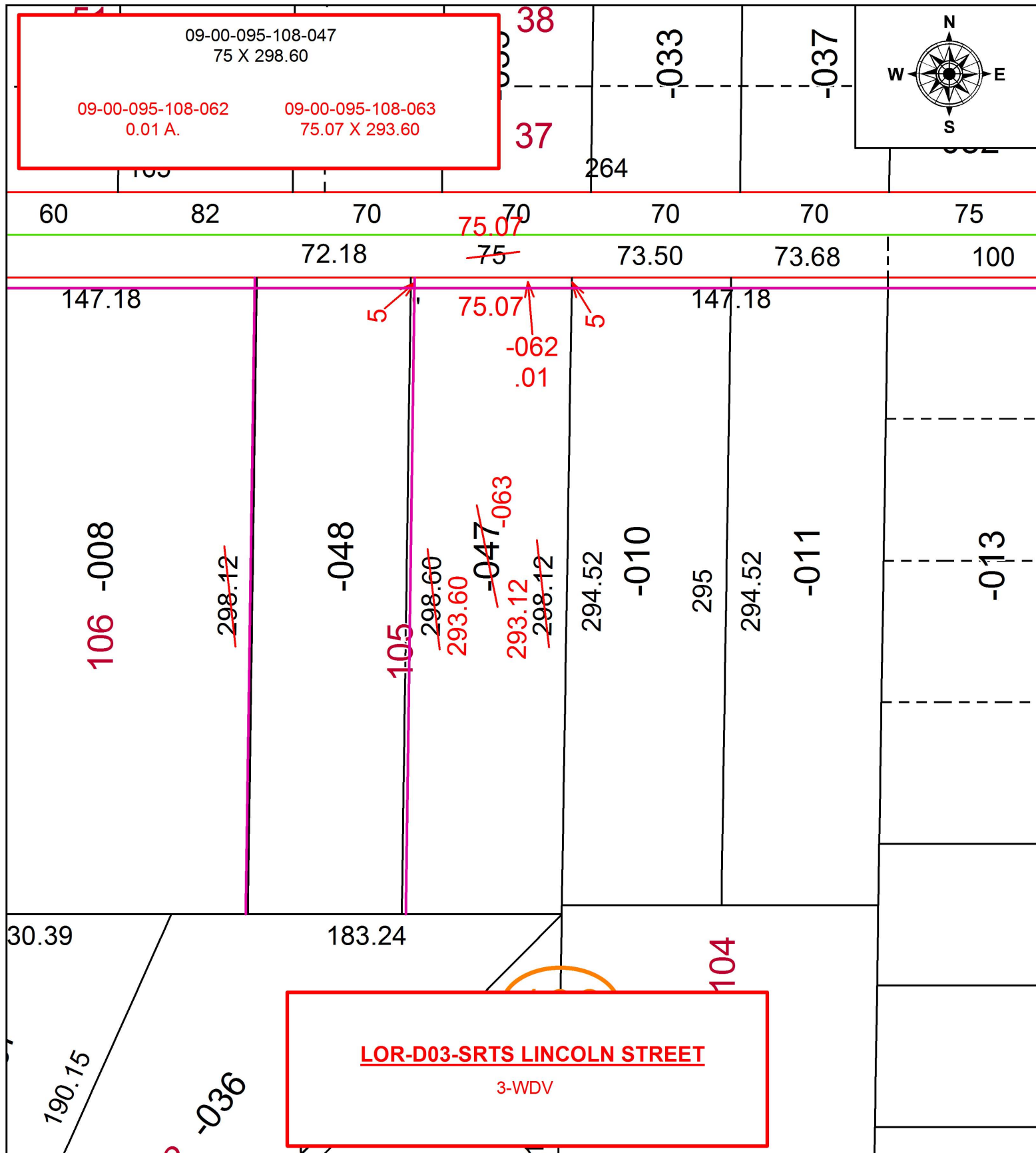


PARENT PARCEL: 09-00-095-108-047

CHILD PARCEL: 09-00-095-108-062, -063

16-00742

STARTING POINT: INTERSECTION OF C/L OF LINCOLN ST. AND C/L OF S. PROFESSOR ST.



SPLITS/DEEDS PROCESSED
 LORAIN COUNTY TAX MAP DEPARTMENT
 226 MIDDLE AVE. ELYRIA, OH

SURVEYED BY: TREVOR A. BIXLER

CLOSURE: 1:2147483648

MAP PAGE(S): 9-00-095

APPROVED BY: RRM DATE: 10-20-16

SCALE: 1" = 60 PRIOR INSTRUMENT: DV 1283/347