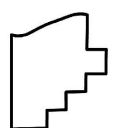
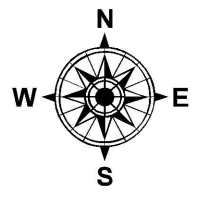
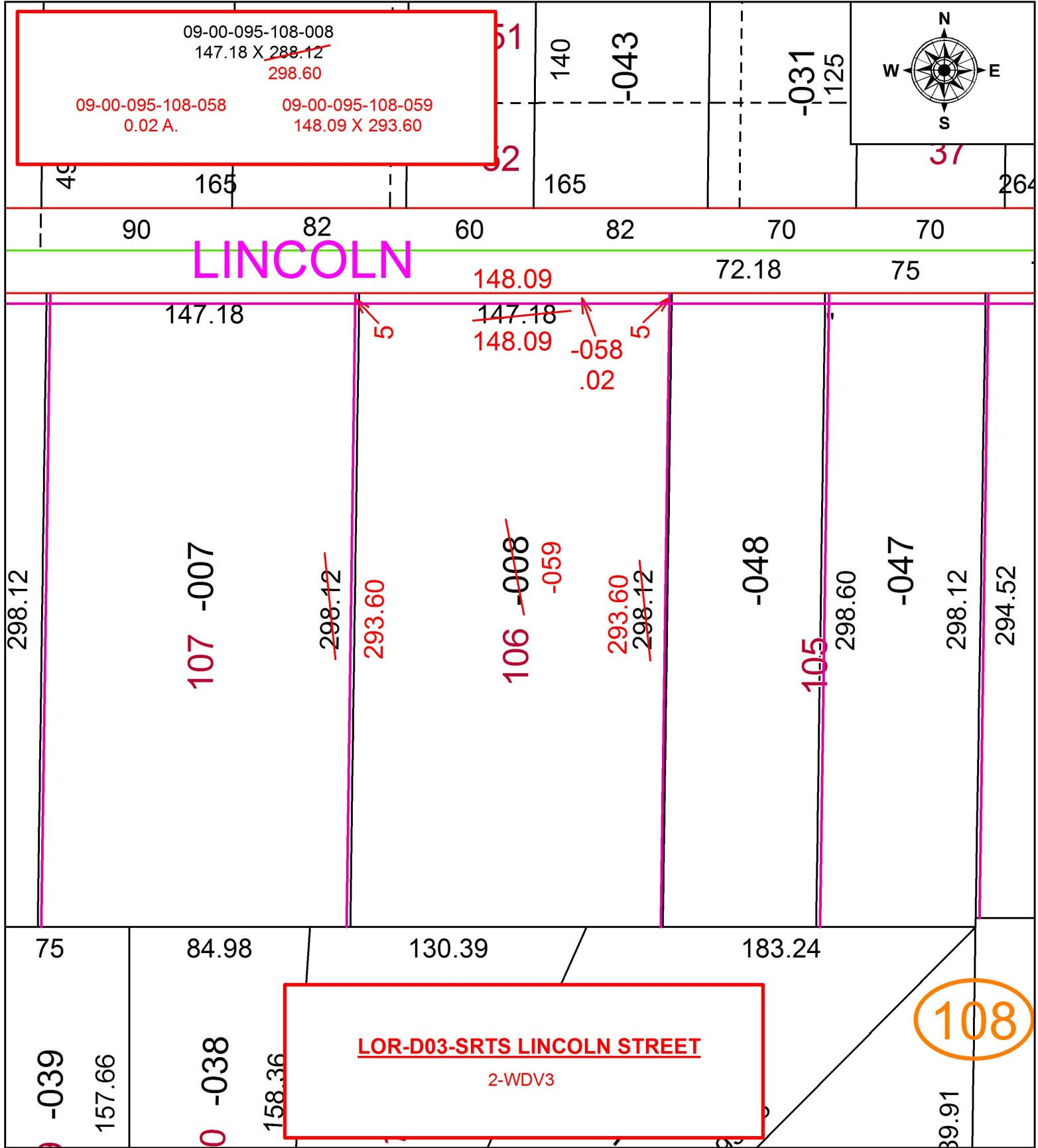


PARENT PARCEL: 09-00-095-108-008

CHILD PARCEL: 09-00-095-108-058, -059

16-00740

STARTING POINT: INTERSECTION OF C/L OF LINCOLN ST. AND C/L OF S. PROFESSOR ST.



SPLITS/DEEDS PROCESSED
LORAIN COUNTY TAX MAP DEPARTMENT
226 MIDDLE AVE. ELYRIA, OH

SURVEYED BY: TREVOR A. BIXLER
CLOSURE: 1:2147483648
MAP PAGE(S): 9-00-095
APPROVED BY: RRM DATE: 10-20-16
SCALE: 1" = 60 PRIOR INSTRUMENT: OR 349/800