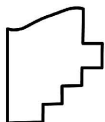
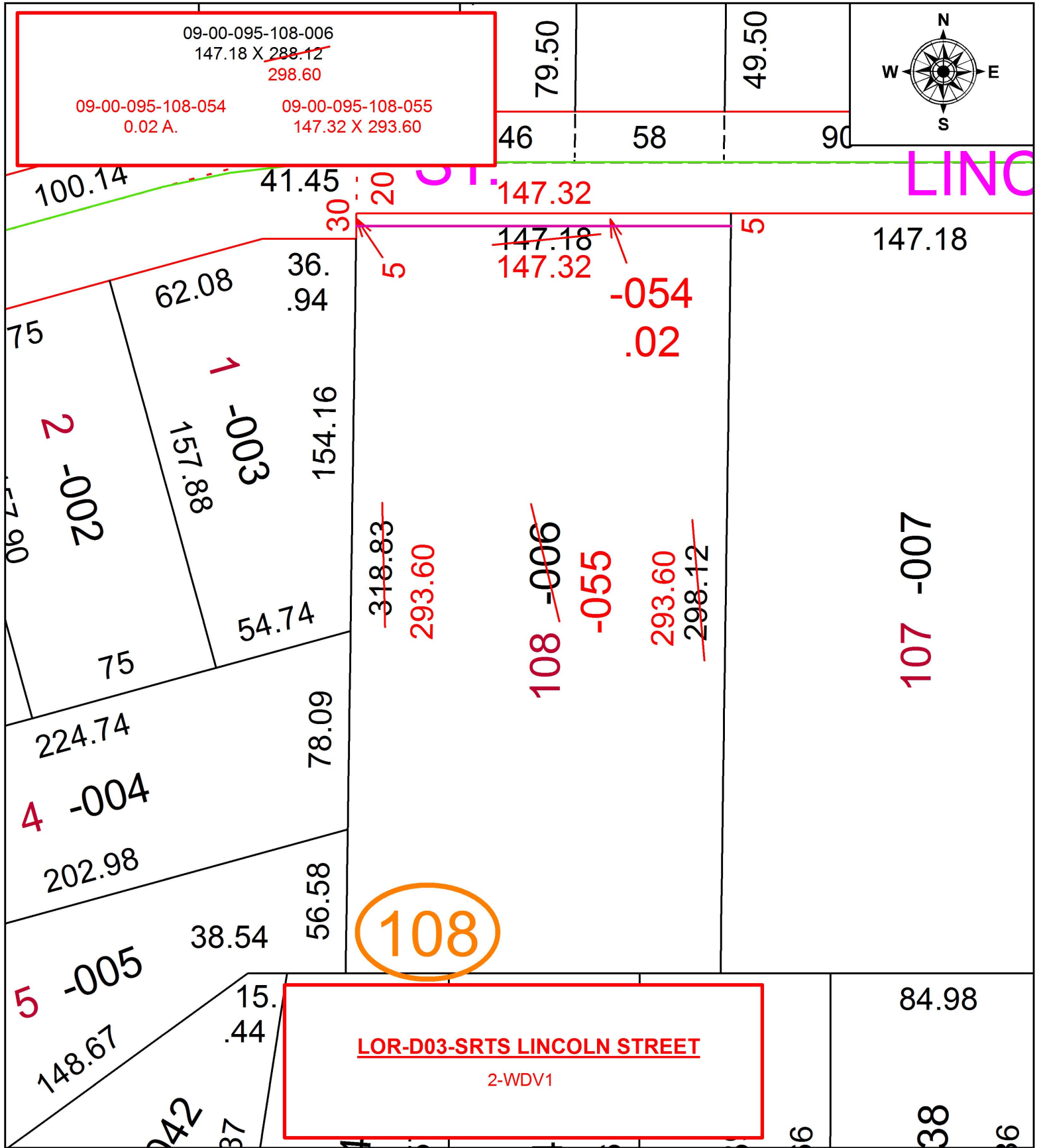


PARENT PARCEL: 09-00-095-108-006

CHILD PARCEL: 09-00-095-108-054, -055

16-00738

STARTING POINT: INTERSECTION OF C/L OF LINCOLN ST. AND C/L OF S. PROFESSOR ST.



SPLITS/DEEDS PROCESSED
LORAIN COUNTY TAX MAP DEPARTMENT
226 MIDDLE AVE. ELYRIA, OH

SURVEYED BY: TREVOR A. BIXLER
 CLOSURE: 1:2147483648
 MAP PAGE(S): 9-00-095
 APPROVED BY: RRM DATE: 10-19-16
 SCALE: 1" = 50 PRIOR INSTRUMENT: OR 349/800