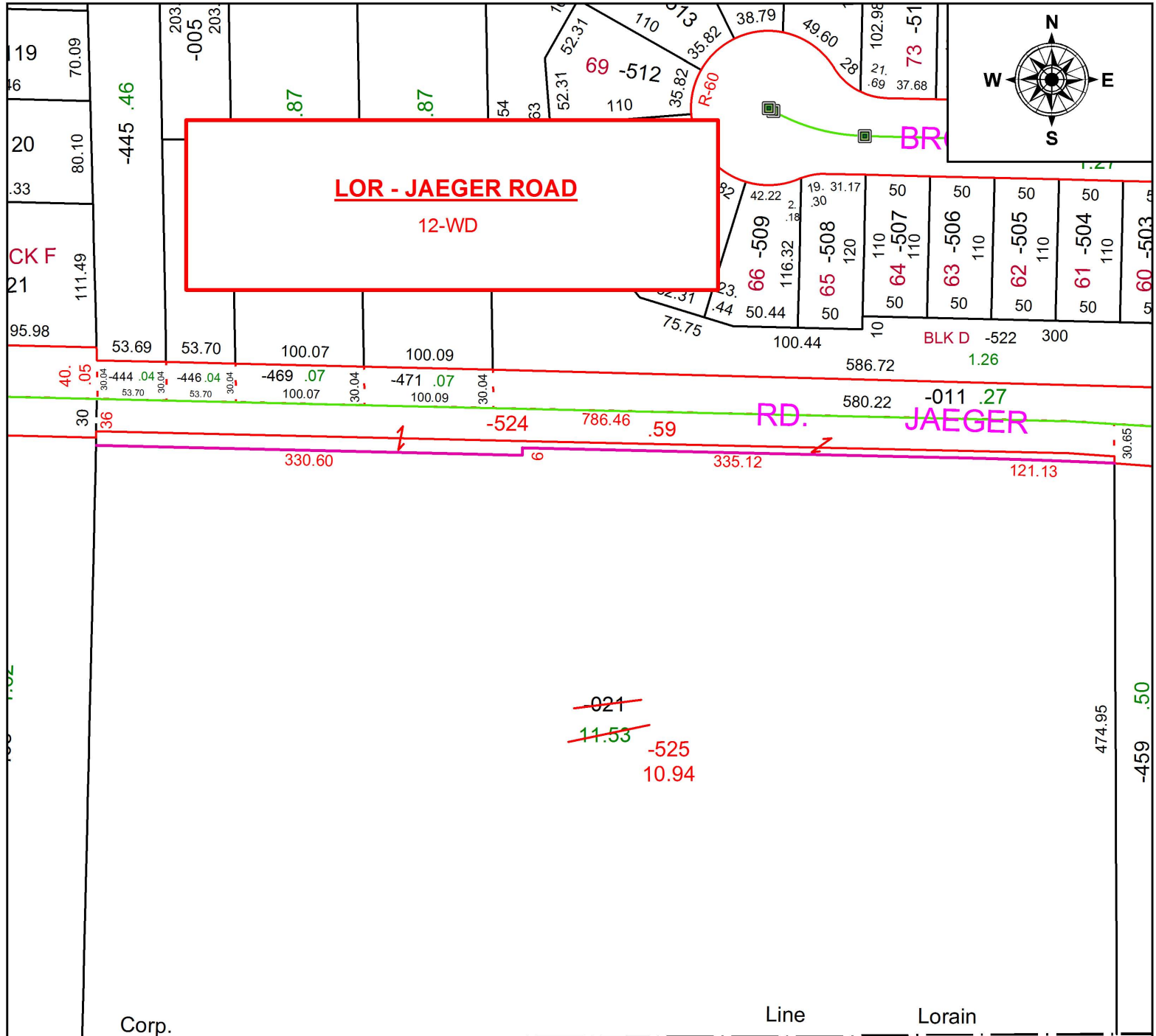


PARENT PARCEL: 02-02-010-000-021

CHILD PARCEL: 02-02-010-000-524, -525

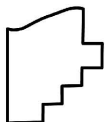
16-00737

STARTING POINT: INTERSECTION OF C/L OF JAEGER RD. AND C/L OF CAMDEN BLVD



Corp. Line Lorain Line

2305.10



SPLITS/DEEDS PROCESSED
 LORAIN COUNTY TAX MAP DEPARTMENT
 226 MIDDLE AVE. ELYRIA, OH

SURVEYED BY: TREVOR A. BIXLER
 CLOSURE: 1: 290,342
 MAP PAGE(S): 2-02-010
 APPROVED BY: RRM DATE: 9-16-16
 SCALE: 1" = 110 PRIOR INSTRUMENT: DV 950/298