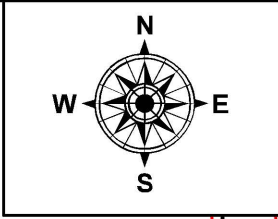


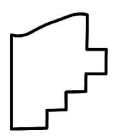
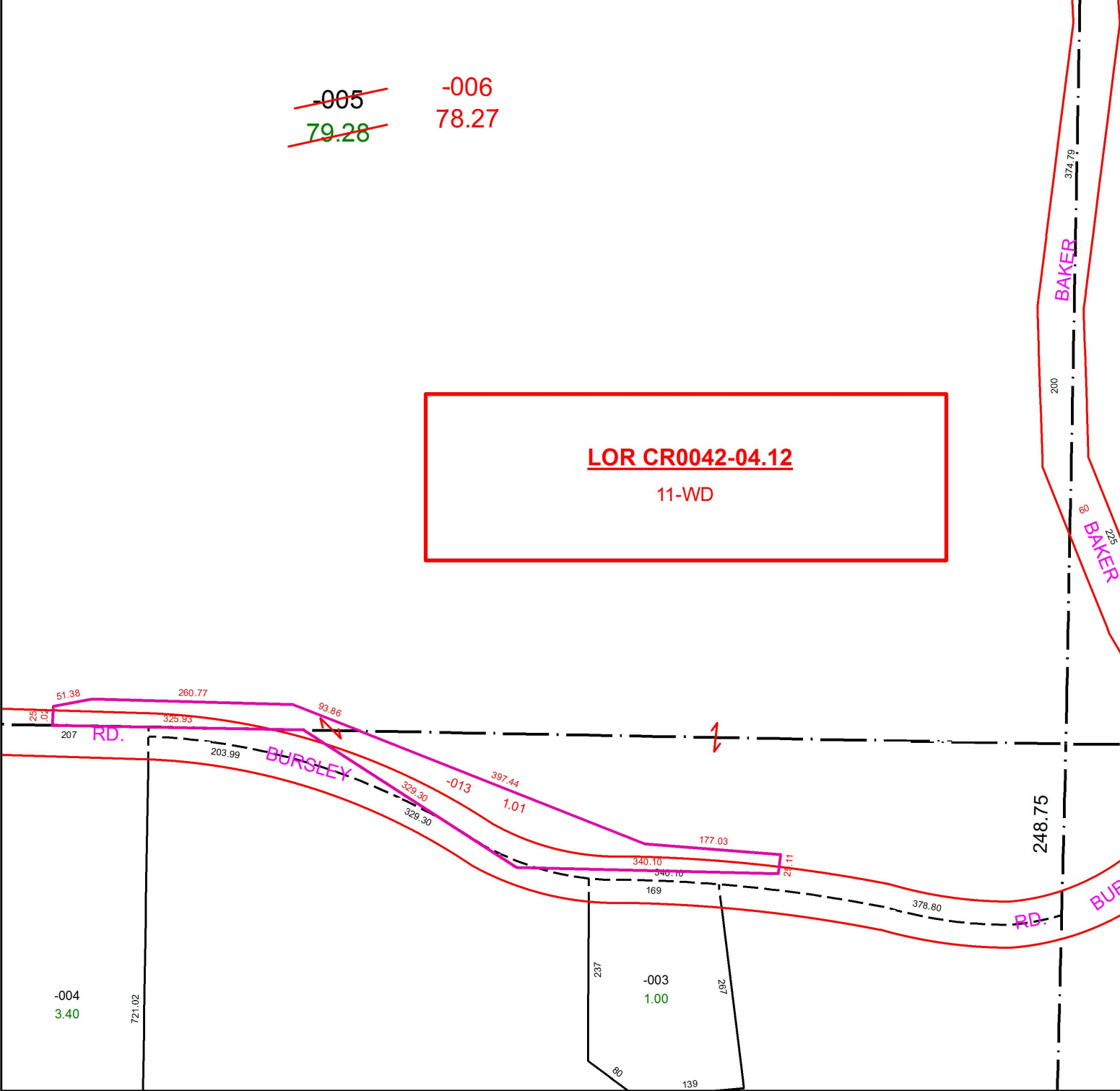
PARENT PARCEL: 21-05-036-000-005  
CHILD PARCEL: 21-05-035-000-013, 21-05-036-000-006  
STARTING POINT: NORTHEAST CORNER OF O.L.35

16-00733



~~-005~~      -006  
~~79.28~~      78.27

**LOR CR0042-04.12**  
11-WD



**SPLITS/DEEDS PROCESSED**  
LORAIN COUNTY TAX MAP DEPARTMENT  
226 MIDDLE AVE. ELYRIA, OH

SURVEYED BY: BRIAN P. MCCARTNEY  
CLOSURE: 1: 501,604  
MAP PAGE(S): 21-A  
APPROVED BY: RRM      DATE: 3-7-16  
SCALE: 1" = 180      PRIOR INSTRUMENT: OR 467/140