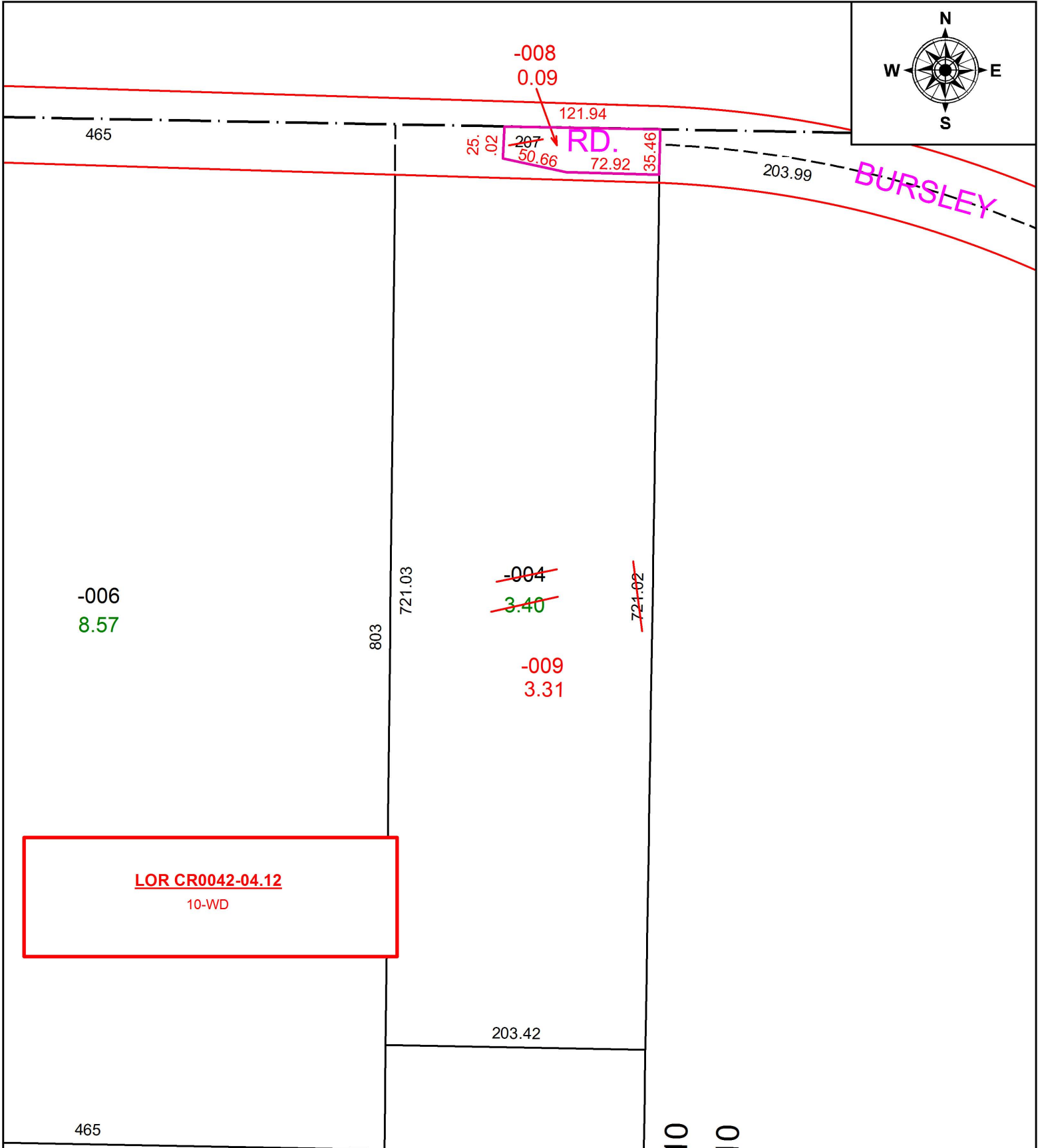
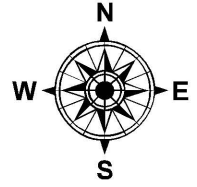
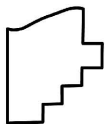


PARENT PARCEL: 21-05-035-000-004
CHILD PARCEL: 21-05-035-000-008, -009
STARTING POINT: NORTHEAST CORNER OF O.L.35

16-00731



LOR CR0042-04.12
10-WD



SPLITS/DEEDS PROCESSED
LORAIN COUNTY TAX MAP DEPARTMENT
226 MIDDLE AVE. ELYRIA, OH

SURVEYED BY: BRIAN P. MCCARTNEY
CLOSURE: 1: 32,416
MAP PAGE(S): 21-A
APPROVED BY: RRM DATE: 3-4-16
SCALE: 1" = 100 PRIOR INSTRUMENT: OR 80/122