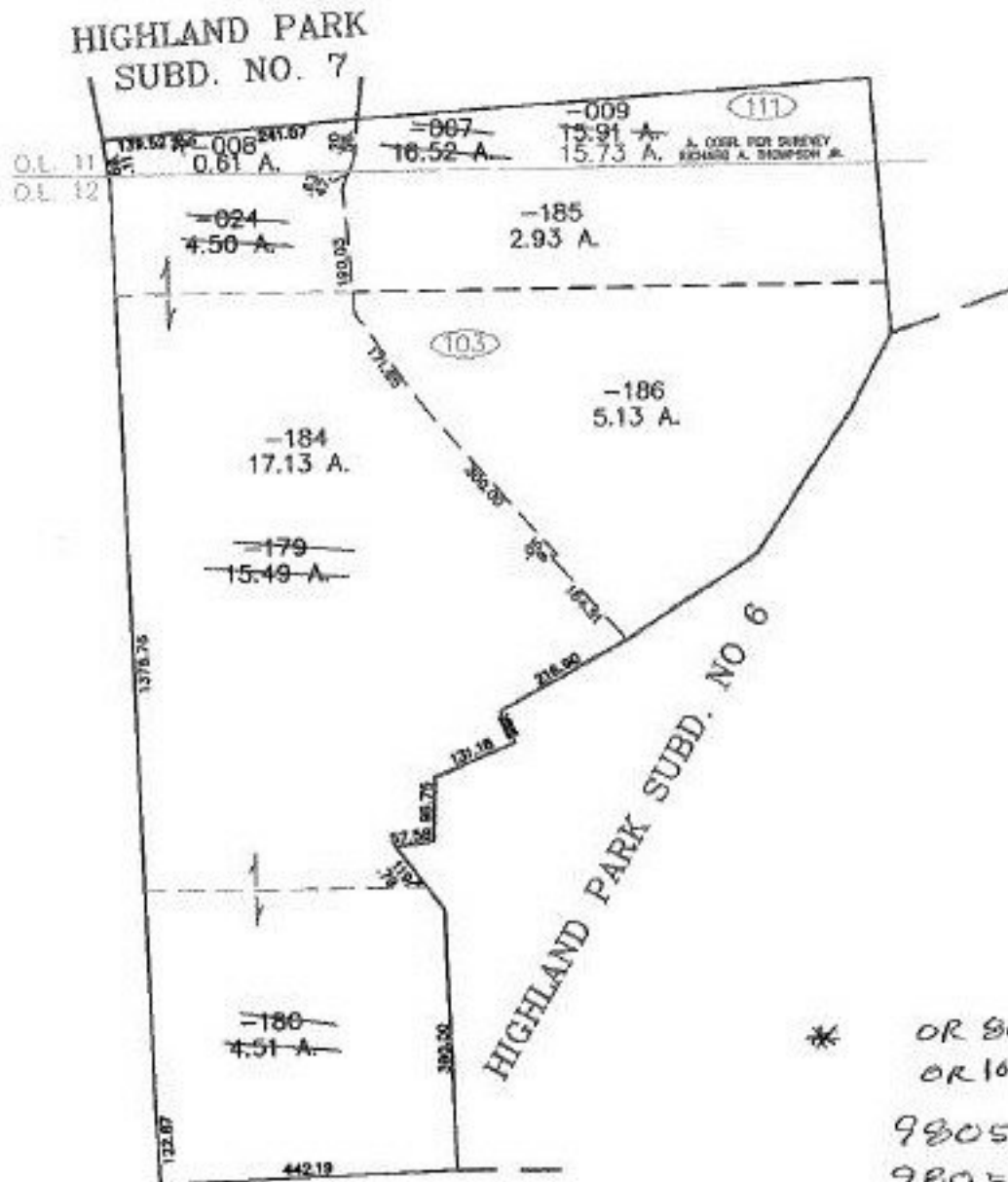


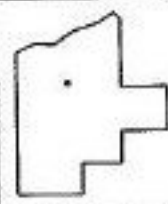
PASTER

PARENT PARCEL: 04-00-011-111-007, 04-00-012-103-024, -179, -180
CHILD PARCEL: 04-00-011-111-008, -009 04-00-012-103-184 THRU 186
STARTING POINT: CORNER OF HIGHLAND PARK SUBD. NO. 7

NO. 00692



* OR 866/15
OR 1645/603
980553 898
980551 523
980554 524
990590 036



SPLITS/DEEDS PROCESSED
LORAIN COUNTY TAX MAP DEPARTMENT
226 MIDDLE AVE. ELYRIA, OHIO

SURVEYED BY: RICHARD A. THOMPSON JR.
CLOSURE: 0.01 : 10.000
MAP PAGE(S): 4-00-011-H, 4-00-012-D
APPROVED BY: JAH DATE: 3-19-01
SCALE: 1" = 300' PRIOR INSTRUMENT: *