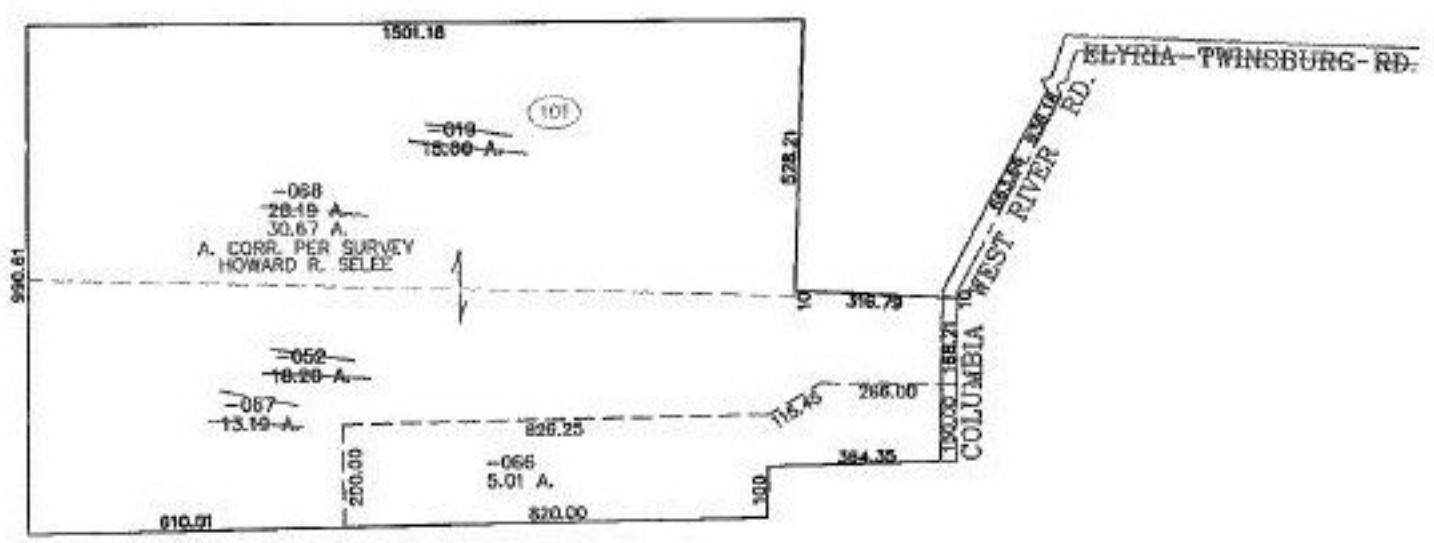


RASTER

PARENT PARCEL: 12-00-055-101-052, -019  
CHILD PARCEL: 12-00-055-101-066 THRU -068  
STARTING POINT: CENTERLINE OF COLUMBIA WEST RIVER RD. & ELYRIA-TWINSBURG RD.

NO. 00665



**SPLITS/DEEDS PROCESSED**  
LORAIN COUNTY TAX MAP DEPARTMENT  
226 MIDDLE AVE. ELYRIA, OHIO

SURVEYED BY: HOWARD R. SELEE  
CLOSURE: 0.03 : 10.000  
MAP PAGE(S): 12-00-055-A, B  
APPROVED BY: JAH DATE: 2-27-01  
SCALE: 1" = 400' PRIOR INSTRUMENT: 990619445