

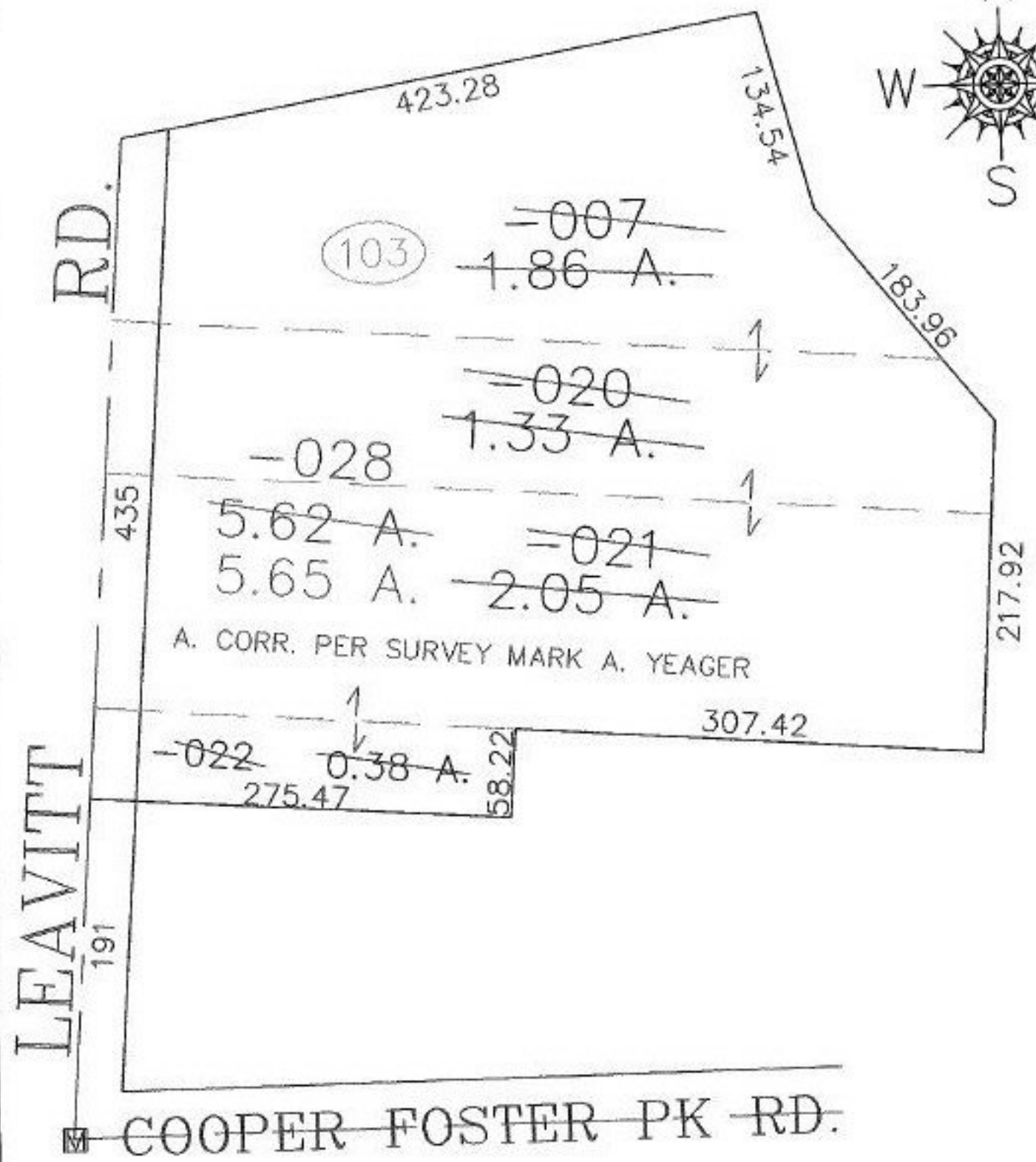
RASTER

NO. 00621

PARENT PARCEL: 02-02-003-103-020, -021, -022, -007

CHILD PARCEL: 02-02-003-103-028

STARTING POINT: CENTERLINES OF COOPER FOSTER & LEAVITT RD.



SPLITS/DEEDS PROCESSED

LORAIN COUNTY TAX MAP DEPARTMENT
226 MIDDLE AVE. ELYRIA, OHIO

SURVEYED BY: MARK A. YEAGER
 CLOSURE: 0.01 : 10,000
 MAP PAGE(S): 02-02-003
 APPROVED BY: JAH DATE: 12-20-00
 SCALE: 1" = 100' PRIOR INSTRUMENT: OR 35/944