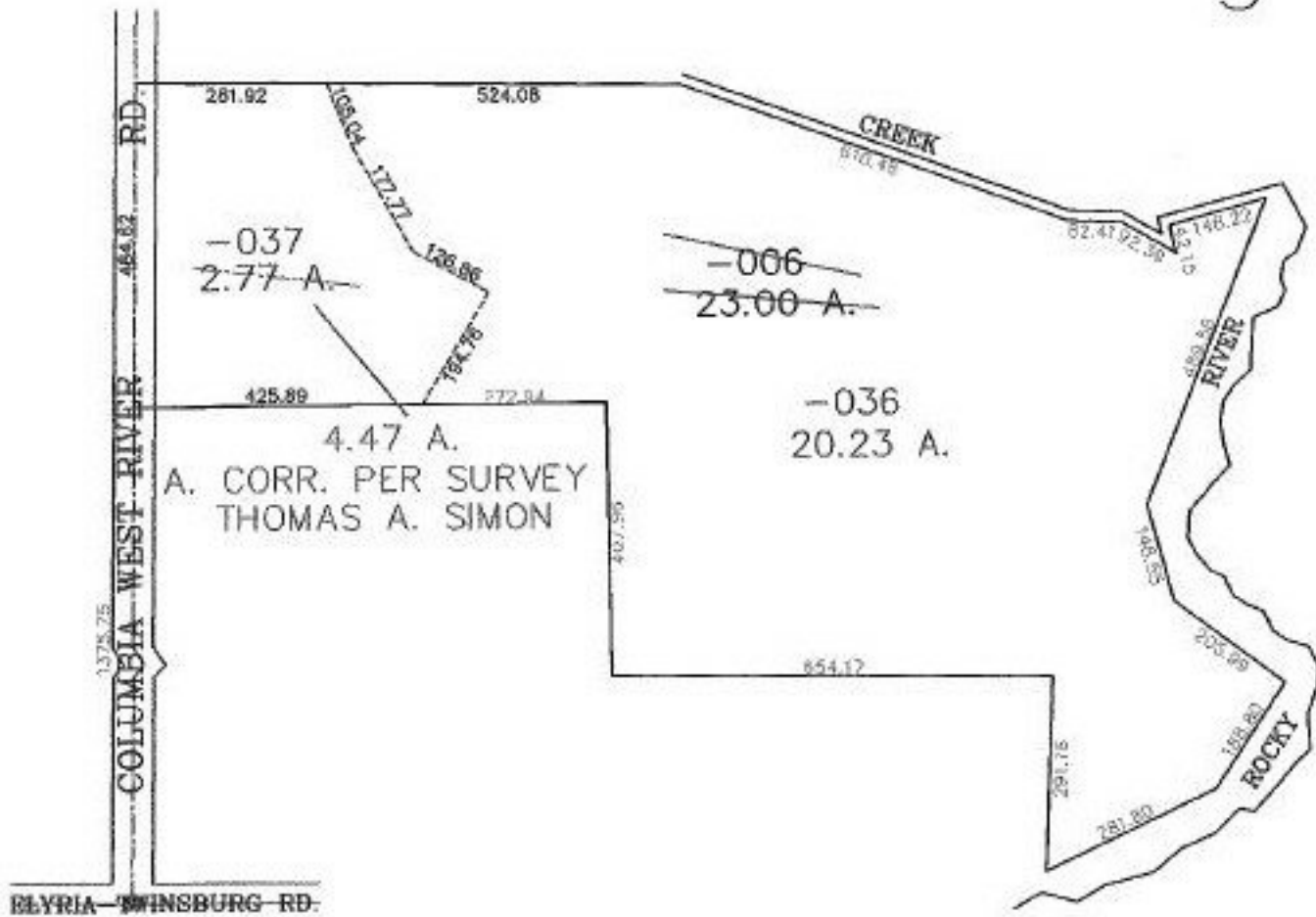


PARENT PARCEL: 12-00-045-000-006

CHILD PARCEL: 12-00-045-000-036, -037

STARTING POINT: CENTERLINES OF ELYRIA-TWINSBURG RD. & COLUMBIA WEST RIVER RD.

NO. 00618



**SPLITS/DEEDS PROCESSED**  
 LORAIN COUNTY TAX MAP DEPARTMENT  
 226 MIDDLE AVE. ELYRIA, OHIO

SURVEYED BY: THOMAS A. SIMON  
 CLOSURE: 0.00 : 10.000  
 MAP PAGE(S): 12-00-045-A, B  
 APPROVED BY: JAH DATE: 12-6-00  
 SCALE: 1" = 300' PRIOR INSTRUMENT: DV 1162/391