

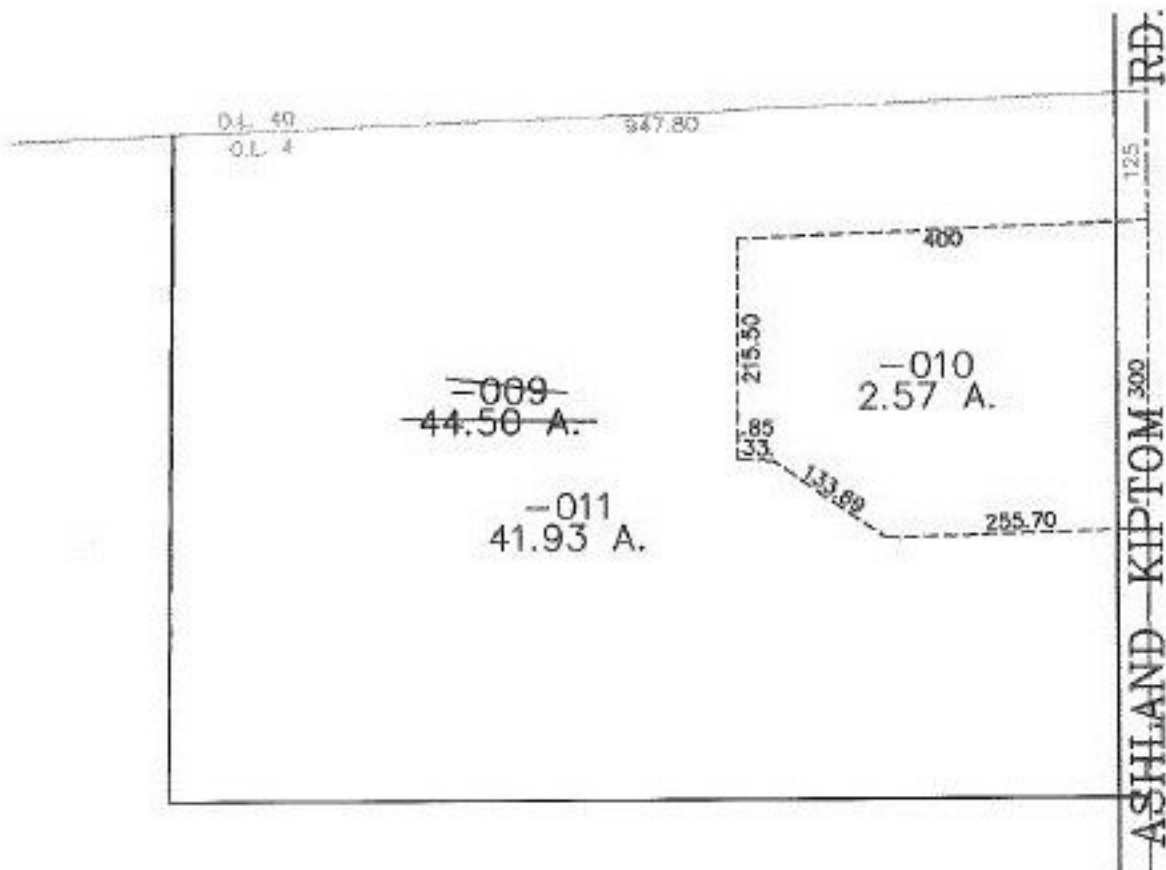
PASTER

PARENT PARCEL: 13-08-004-000-009

CHILD PARCEL: 13-08-004-010, -011

STARTING POINT: CENTERLINE OF ASHLAND-KIPTON RD. & O.L. 4

NO. 00596



SPLITS/DEEDS PROCESSED
 LORAIN COUNTY TAX MAP DEPARTMENT
 226 MIDDLE AVE. ELYRIA, OHIO

SURVEYED BY: JOHN POZYWAK
 CLOSURE: 0.22 : 10,000
 MAP PAGE(S): 13-F
 APPROVED BY: JAH DATE: 11-6-00
 SCALE: 1" = 200' PRIOR INSTRUMENT: DV1229/489