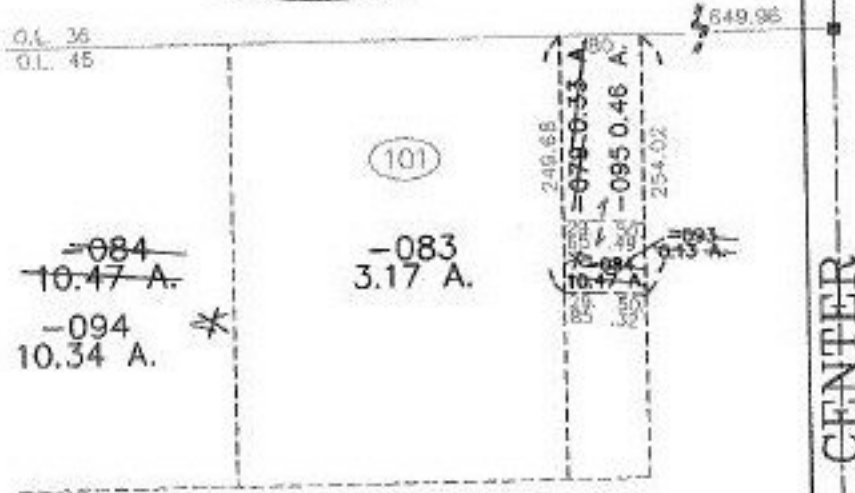
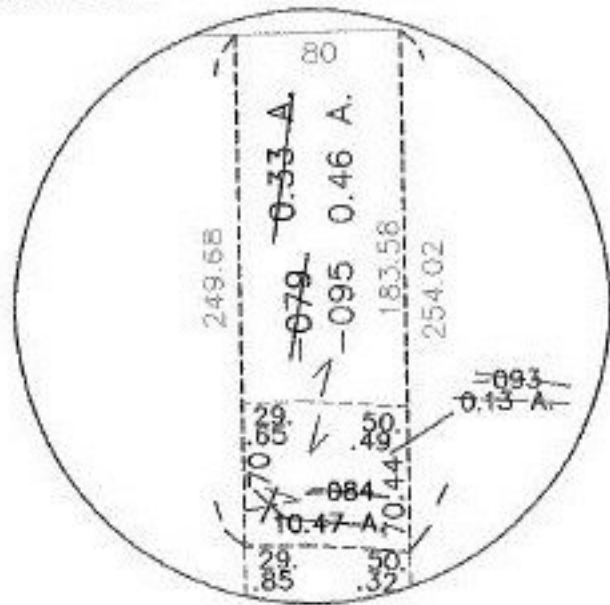


RASTER

PARENT PARCEL: 15-00-045-101-084 & -079
CHILD PARCEL: 15-00-045-101-093 THRU -095
STARTING POINT: CENTERLINE OF CENTER ST. & O.L. 45

NO. 00593

DETAIL NOT TO SCALE



SPLITS/DEEDS PROCESSED
LORAIN COUNTY TAX MAP DEPARTMENT
226 MIDDLE AVE. ELYRIA, OHIO

SURVEYED BY: LAUDON, SIMON & CAHL
CLOSURE: 0.19 : 10.000
MAP PAGE(S): 15-00-045-A, B
APPROVED BY: JAH DATE: 10-30-00
SCALE: 1" = 200' PRIOR INSTRUMENT: