

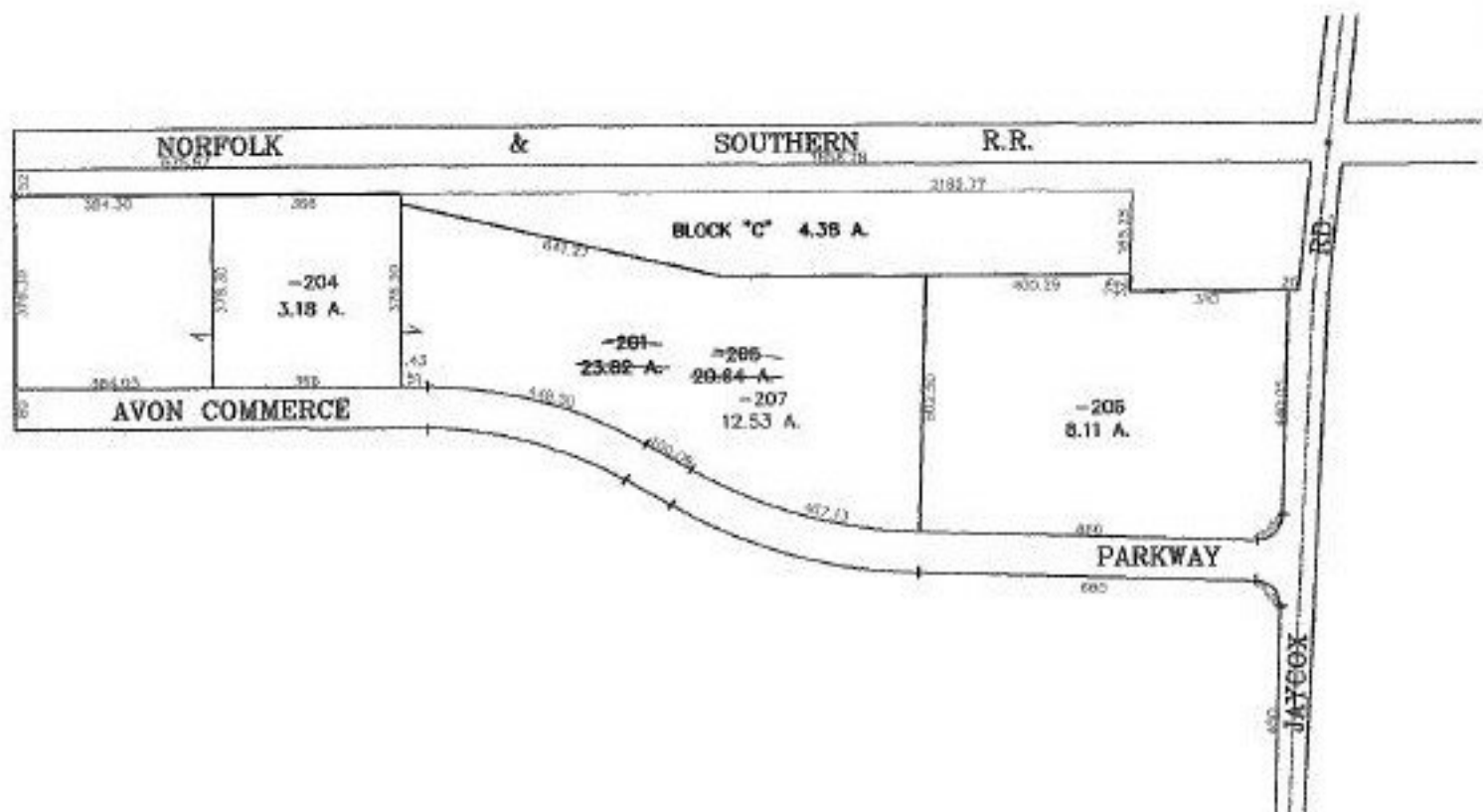
RASTER

PARENT PARCEL: 04-00-021-000-201

CHILD PARCEL: 04-00-021-000-204 THRU -207

STARTING POINT: IRON PIN AT NORTHWEST CORNER OF BLOCK "A"

NO. 00588



SPLITS/DEEDS PROCESSED
LORAIN COUNTY TAX MAP DEPARTMENT
 226 MIDDLE AVE. ELYRIA, OHIO

SURVEYED BY: PETER C. ZWICK

CLOSURE: 0.00 : 10.000

MAP PAGE(S): 4-G

APPROVED BY: JAH DATE: 10/18/00

SCALE: 1" = 400' PRIOR INSTRUMENT: PLAT VOL. 65 PG 58