

RASTER

PARENT PARCEL: 06-26-092-000-024

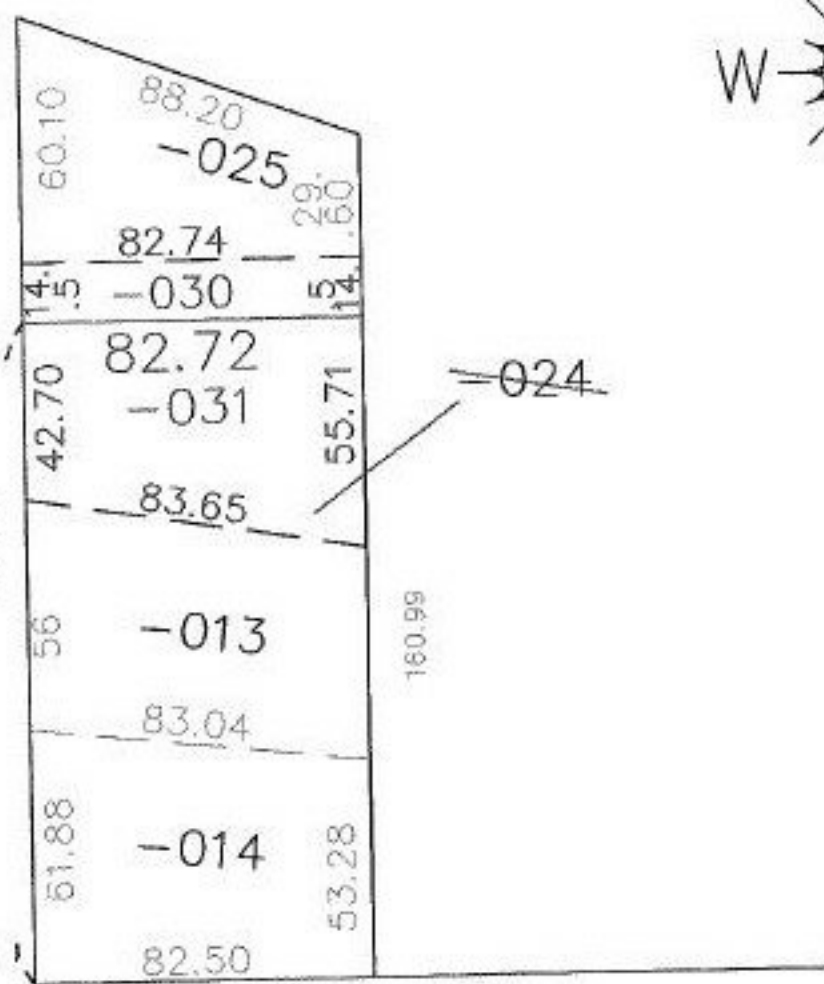
CHILD PARCEL: 06-26-092-000-030, -031

STARTING POINT: CENTERLINES OF ELM ST & CHESTNUT ST.

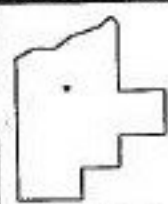
NO. 00553



CHESTNUT ST.



ELM ST.



SPLITS/DEEDS PROCESSED
 LORAIN COUNTY TAX MAP DEPARTMENT
 226 MIDDLE AVE. ELYRIA, OHIO

SURVEYED BY: DAVID L. ELWELL
 CLOSURE: 0.03 : 10,000
 MAP PAGE(S): 6-101
 APPROVED BY: JAH DATE: 8-29-00
 SCALE: 1" = 50' PRIOR INSTRUMENT: