

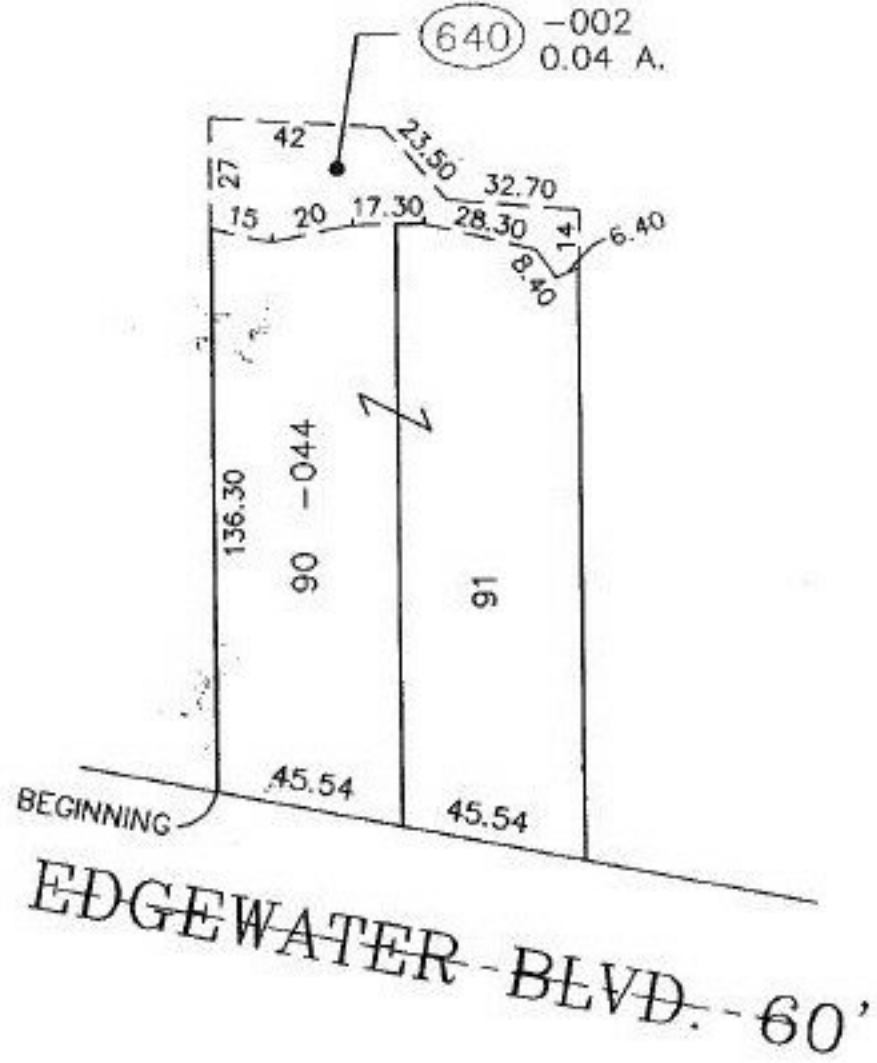
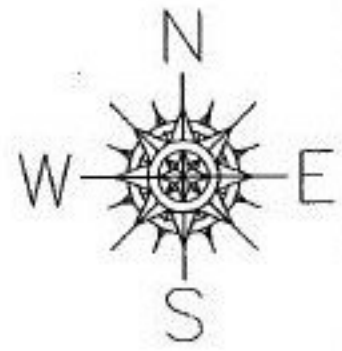
Never Filed

PARENT PARCEL: SUBMERGED LAND LEASE  
CHILD PARCEL: 01-00-003-640-002  
STARTING POINT: S.W. CORNER OF S\ L 90 IN VERMILION-ON-THE-LAKE SUB. NO. 1

NO. 00535

# SUBMERGED LAND LEASE

FILE NO. SUB.-2153-L0  
01-00-003-640-002  
0.04 A.



**SPLITS/DEEDS PROCESSED**  
LORAIN COUNTY TAX MAP DEPARTMENT  
226 MIDDLE AVE. ELYRIA, OHIO

SURVEYED BY: M.G. HURA  
CLOSURE: 4.26 : 10.000  
MAP PAGE(S): 1-00-003-B  
APPROVED BY: T. SPILLMAN DATE: 08/24/00  
SCALE: 1" = 50' PRIOR INSTRUMENT: NONE