

2442.28  
- 025  
15.53 A.  
2435.39

- 026  
15.49 A.  
2428.50

**91**  
~~- 023~~  
~~23.93 A.~~ ~~23.5311 A.~~

2016.75  
2410.32  
2416.38

11.97 A.

1960.02

5.01 A.

7.70 A.

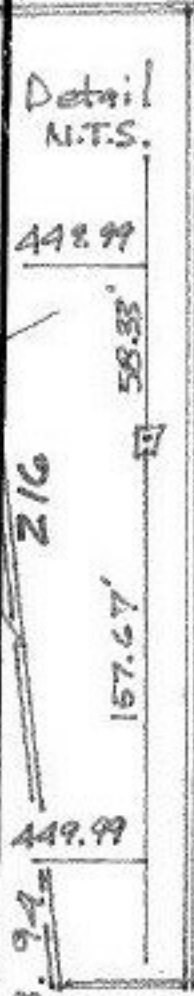
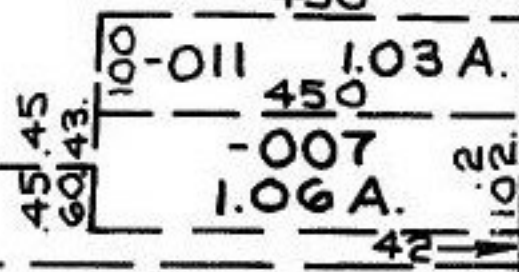
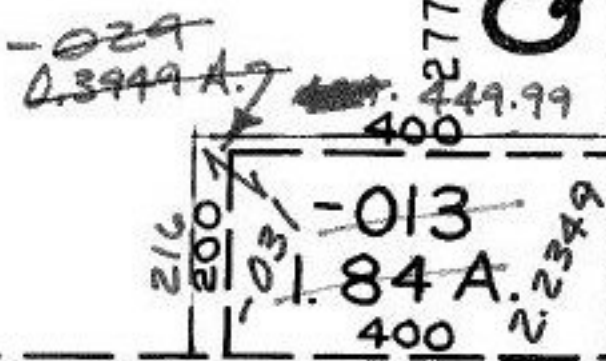
2403.60

13.34 A.

2397.30

2391.00  
2402.40  
13.34 A.

277.54  
**QUARRY**



#00533

APPROVED LORAIN CO. MAP DEPT
DATE 8-18-2000
PAGE 9-00-009 E
BY <i>[Signature]</i>

**HA**