

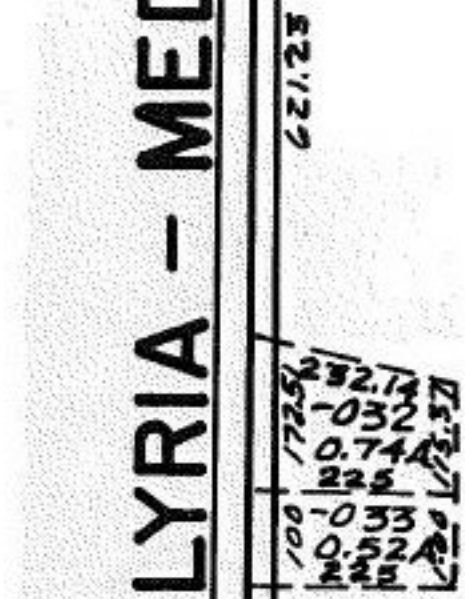
FASTER

ELYRIA - MEDIN.

-034 #00520
38.82 A.

APPROVED LORAIN CO. MAP DEPT
DATE 8-10-2000
PAGE 11-E North
BY <i>Korbel</i>
#00520

91
Pt-020



1026.41

2604
2601.25

-038
Pt. -011
Pt. 50.93A.
51.20 A.

2786.96
2791
2781.68
Pt. -015
Pt. 18.78 A.

1.5109A

