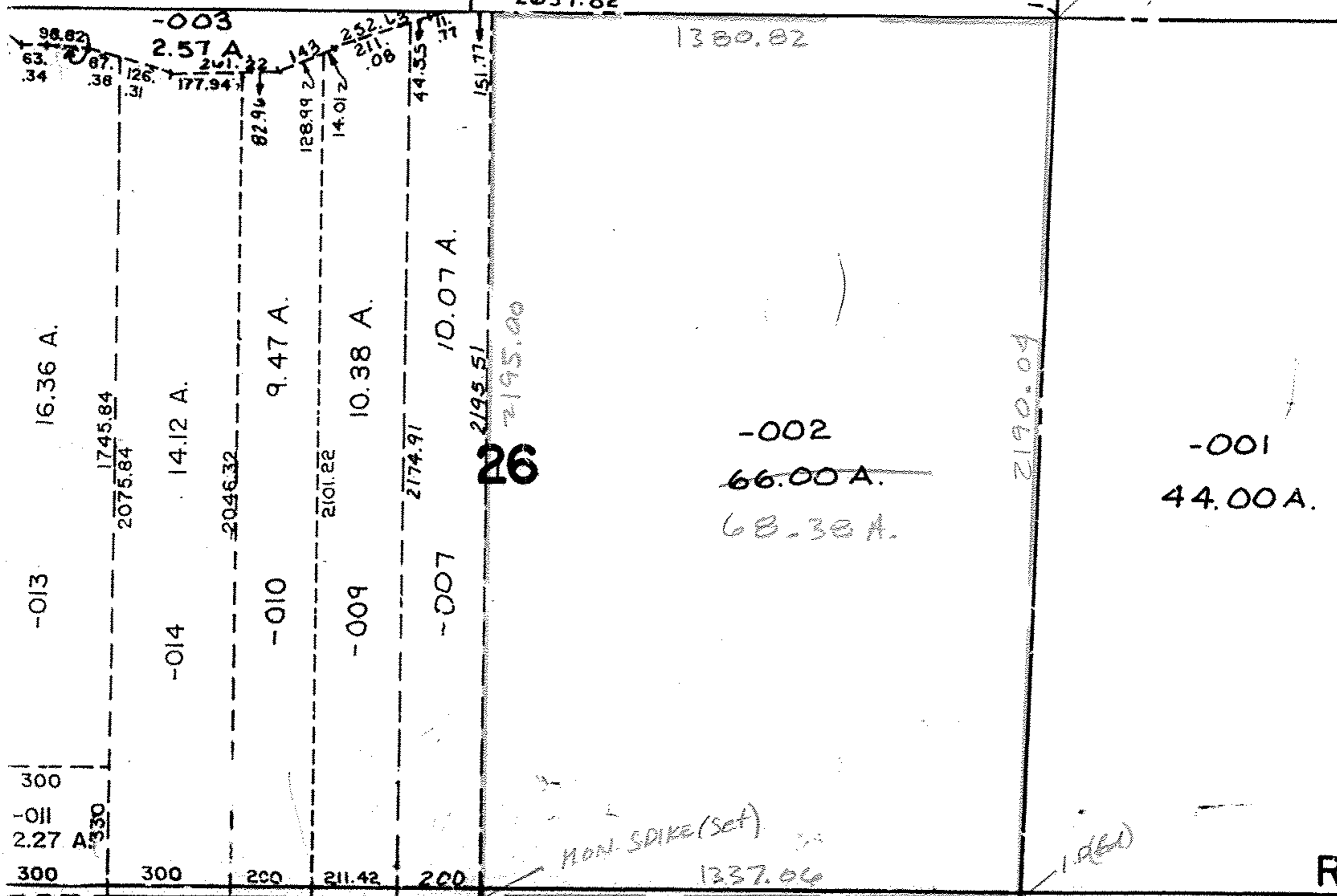


13-16-026-000-002

54.59 A.

64.41 A.



SR 303

SURVEY BY VIRGIL D. LANDIS, P.S. #6551  
 MAY 2000  
 SHAFER, JOHNSTON, LICHTENWALTER & ASSOC  
 CL = 0.01 : 10,000  
 PRIOR INST. REF. DV 1294, P. 341

ACRE. CORR.

#00493  
 APPROVED  
 LORAIN CO.  
 MAP DEPT  
 DATE 7-5-00  
 PAGE 13-D  
 BY T. McNamee  
 #00493